

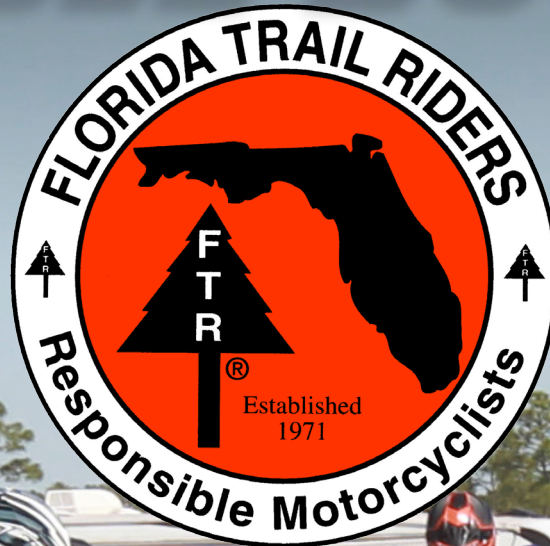
12AA  
RED BACKGROUND  
WHITE NUMBERS  
& LETTERS

[www.floridatrailriders.org](http://www.floridatrailriders.org)

# Florida Trail Riders

## 2016-2017

# RULE BOOK





## WELCOME TO THE FLORIDA TRAIL RIDERS!

The Florida Trail Riders (FTR) is a registered, nonprofit Florida corporation more than 45 years old with 2,800 plus members throughout the state and country.

The purpose of FTR is to promote the image of “Responsible Motorcyclists;” to sanction, schedule, assist and monitor off-road motorcycle and ATV events in Florida; to establish policies, rules and procedures to be followed by promoters, with the end result being a series of organized events; to sponsor and support positive motorcycle legislation and; to establish and maintain good rapport with private land owners, local, state and federal land management agencies.

The FTR and its membership is made up of amateur motorcycle enthusiasts from all walks of life from across the state of Florida who have the exciting sport of off-road motorcycling as a common interest. There are family people (husbands, wives, children); professional people (doctors, lawyers, teachers); technicians and laborers. Off-road motorcycling holds no social, age, or ethnic bounds. With a strong common interest there is no young or old, black or white, rich or poor ... just people who love their sport.

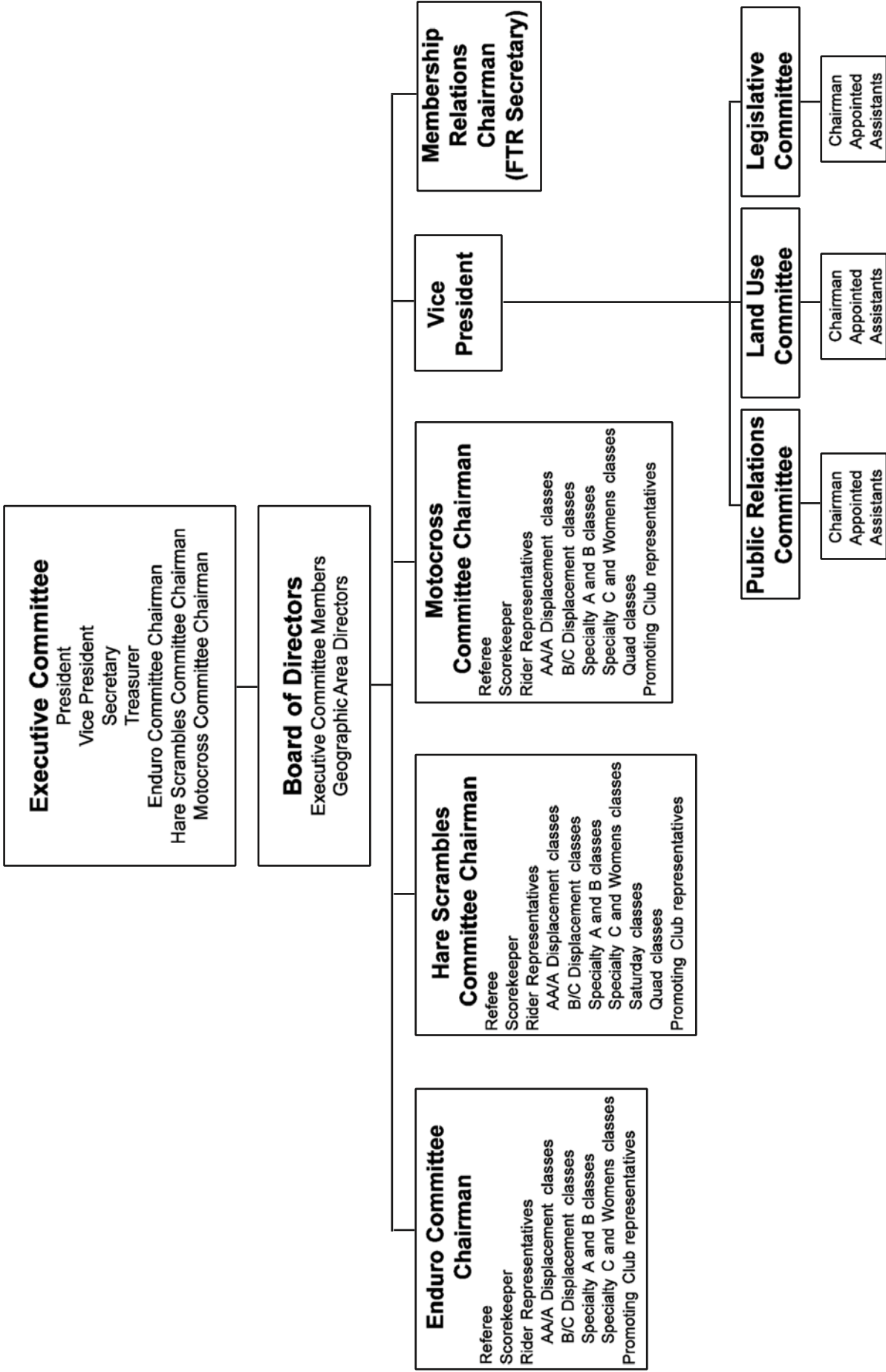
The following rules are the result of the years of effort by the FTR to establish fair and viable guidelines for ongoing off-road motorcycle and ATV events. We hope that through the FTR, Florida can have safer, better organized, and more enjoyable events for all Enduro, Hare Scrambles and Motocross enthusiasts.

The FTR is truly a member-service organization. If you have a problem, a question or disagree with a rule, FTR is ready to listen and help. Just contact any officer or director listed in the back of the FTR monthly magazine and your call, letter or email will be acted on promptly.

**If a rule or definition is not covered in this rule book, it is left to the current AMA rule book.**

FTR encourages clubs to co-sanction events with AMA and SE&TRA. FTR encourages riders to attend sanctioned events. In a co-sanctioned event, a rider will ride by the rules of their own organization (AMA, SE&TRA, FTR). Conflicts shall be settled by the promoting club and the organization's referee.

**Florida Trail Riders, Inc.  
Table of Organization**



# ***Table of Contents***



***Constitution 4***

***Bylaws 9***

***Definitions 10***

***General Rules 11***

***Enduro Rules 17***

***Hare Scrambles Rules 22***

***Motocross Rules 29***

The Constitution, Bylaws and rules within this book reflect the best efforts of FTR, its members and officers.

It has evolved over many years and continues to do so. If you have suggestions for changes, please contact any officer or director.

LEGEND:

**2016-2017 CHANGES**

**2016-2017 EMERGENCY RULE CHANGES**

## **Chapter I**

### **Constitution of the Florida Trail Riders**

#### **Article I**

This organization shall be known as the FLORIDA TRAIL RIDERS, INC. (FTR). FTR is incorporated as a nonprofit organization by the state of Florida.

#### **Article II**

Active members shall be riders of motorcycles, and/or enthusiasts who participate in competition events and off road riding. Honorary members may be motorcycle enthusiasts and such other persons as the organization may decide by a two-thirds vote of those present at any Board of Directors meeting. Only active Adult members shall be entitled to a vote in the organization's affairs. Members in paid positions may not vote on matters that they stand to gain financially for a business, self or related family member. Voting privileges of Juvenile members are limited to matters concerning the Mini, 65 and Peewee classes.

#### **Article III**

The Officers of the Organization shall be, President, Vice President, Treasurer and Secretary

#### **Article IV**

The duties of the President shall be:

To preside at all meetings of the Executive Committee and Board of Directors.

To have general supervision of the affairs of the organization.

To appoint any person or committee not otherwise ordered by the organization.

To personally represent the organization on proper occasions and business contracts.

To assist all other officers of the organization in their responsibilities and duties.

To qualify for office, the President shall have been a member of FTR in good standing for a minimum of 3 years at the time of election to office.

#### **Article V**

The duties of the Vice President shall be:

To perform all duties of the President in his absence. To coordinate the efforts of the Land Use, Public Relations and Legislative Committees.

To qualify for office, the Vice President shall have been a member of FTR in good standing for a minimum of 2 years at the time of election to office.

#### **Article VI**

The duties of the Secretary shall be:

To act as the Membership Committee Chairman. To keep a record of meetings of the organization. To handle organizational correspondence as directed by the Executive Committee.

To qualify for office, the Secretary shall have been a member of FTR in good standing for a minimum of 2 years at the time of election to office.

To perform such other duties as generally fall to that office. To maintain a current list of FTR membership.

#### **Article VII**

The duties of the Treasurer shall be:

To collect dues from all members, promoters & associates. To qualify for office, the Treasurer shall have been a member of FTR in good standing for a minimum of 2 years at the time of election to office.

To collect all other monies due the organization.

To make all payments from organization funds when so ordered by the organization.

To keep a written report of all organization money matters. To make a statement of organization funds at least twice a year, the last statement at the conclusion of his term of office. To work closely with the Membership Committee.

#### **Article VIII**

The duties of Geographical Area Directors shall be:

To act as voting members of the Board of Directors To qualify for office, a Geographical Area Director shall have been a member of FTR in good standing for a minimum of 2 years at the time of election to office.

To assist the officers with their duties.

To act as direct representatives of the members of their geographic areas to the Executive Committee. To act as liaisons between promoters and/or clubs in their geographic areas and the organization.

The geographic areas will be reviewed by the Board of Directors and modified, if necessary, at least once in every five year period. To vote for a Director in a specific area or run for the Director position you must live in the Directors Geographic Area.

#### **Article IX**

An annual election shall be held in November of each year.

The President, Vice President, Secretary and Treasurer shall hold their offices for two years. All other elected positions shall hold their offices for one year. All new terms will commence January 1 following the annual election. Should an annual election be determined to be invalid, the expiring terms will be extended for 90 days or until a new election can be held, whichever occurs first. Impeachment can only be accomplished by a two-thirds majority secret ballot vote of the General Membership by mail and will be called for by a three-quarters majority secret ballot vote of the Board of Directors.

Any officer found guilty of financial gain by way of their FTR position shall be subject to impeachment.

An Election Committee of four persons will be appointed to oversee the election process and to announce the winning candidates. One Election Committee member shall be appointed by each of the following: Hare Scrambles Committee; Enduro Committee; Motocross Committee; and the Board of Directors. The Board of Director's appointee shall act as the Election Committee Chairman. Should a competition committee fail to appoint an Election Committee member, the referee for that series will serve as the appointee. Should the Board of Directors fail to appoint an Election Committee member, the Executive Committee shall appoint one. An Election Committee member must not be a candidate for elective office.

Balloting procedures, supervised by the Election Committee, shall be as follows:

1. For the annual election, a request for nominations will be posted on the home page of the FTR website and in the Official News and Announcements section of the FTR Forum by September 15 of the election year along with the mailing address and email address of the Election Committee Chairman. All nominations must be sent by mail or email to the Election Committee Chairman. October 15 will be the closing date for nominations. Nominations submitted by email must be received by the closing date for nominations. Nominations submitted by mail must be postmarked before the closing date for nominations and received no later than 5 days after the closing date. An official ballot will be posted on the FTR website during the election month beginning with the first day of the month and remain posted until the end of the month. Notification of the availability of the ballot will be posted in the same manner as the request for nominations. It is recommended that the request for nominations and the official ballot also be included in the appropriate issues of the FTR magazine. If the official ballot is included in the magazine, it is recommended that it be an INSERT separate from the regular pages of the magazine.

2. The official ballot will clearly indicate how, when, and to whom the ballot must be delivered. The official ballot must require the member's name and address, FTR number, and the member's signature. The only ballots accepted will be the official ballot containing the required information, signed by the member, and received by the Election Committee Chairman by November 30 of the election year. Ballots will only be accepted by U.S. mail, private courier service (FedEx and UPS), or email. Emails must contain a scanned copy of the official ballot meeting all of the above requirements.

3. The official ballot count will be made at the earliest opportunity following the last day of the election month. The FTR Secretary, or their designee will provide a current FTR membership list (as of the end of the election month). All ballots will be compared against the membership list for validity. Only members in good standing as of the election month will be allowed to cast one single vote. Those with more than one vote cast or with ballots that are not legible or properly filled out will have all votes discarded and not counted in the election. (Voting rights of members are indicated in Chapter II.) The FTR Secretary, or their designee, will be notified of the results immediately following the final vote count. It will be the duty of the Secretary, or their designee, to publicize the election results.

4. In the event of a tie, a run-off will be held. The individuals with the 2 highest vote counts will be placed on an official ballot published on the official FTR Website. The candidate who garners the highest number of votes in the run-off will be considered the winner and will assume the position in question. Balloting procedures specified in paragraphs 2. and 3. above shall apply.

5. In the event that an elected position on the Executive Committee is unfilled due to the resignation, death, incapacity, or impeachment of an officer, a separate election will be held to fill the vacancy. Incapacity of an elected member of the Executive Committee may only be made by a two thirds

majority vote of the Executive Committee. The FTR Secretary, or a designee appointed by the Executive Committee, will publicize the vacancy, accept nominations, and post an official ballot on the FTR website in similar manner as that specified for the regular annual election in paragraphs 1. and 2. above. Balloting procedures specified in paragraphs 2. and 3. above shall apply.

6. In the event an election is determined to be invalid, a new election month shall be declared by the Executive Committee and an official ballot shall be posted as specified in paragraph 1. above. Balloting procedures specified in paragraphs 2. and 3. above shall apply.

7. With all elections, a direct mail-out of the official ballot by first class mail to the general membership may be substituted for the insertion of the official ballot in the FTR magazine. Said direct mail-out may only be done with approval of the Executive Committee.

Protest of the results or validity of an election may only be made by a candidate for office and must be made no later than 10 days following notification of the results of the election. The protest must be in writing (email is acceptable) to the FTR Secretary, or designee. The FTR Secretary, or designee will immediately notify the Executive Committee of the protest. The Executive Committee will have 10 days to rule on the protest.

#### **Article X**

There will be an Annual General Membership Meeting to be held at the banquet. All Executive Committee Meetings will be called by the President or any five of the eight members.

There will be a minimum of two Board of Directors meetings each year. Additional meetings may be called by the Executive Committee or 50 percent of the Board of Directors.

Robert's Rules of Order shall govern all meetings. The quorum required for all committees and Board of Directors meetings shall be 50% of the members except for the Executive Committee which will be two-thirds of the members. The General Membership meeting quorum requirement shall be one hundredth of all active FTR members. Teleconferencing may be used for official meetings, provided all other meeting requirements are met, except for General Membership and Board of Directors meetings. For the purposes of determining a quorum for the Executive Committee, unfilled Executive Committee positions due to resignations or death shall not count as members.

#### **Article XI**

The Executive Committee shall consist of the President, Vice President, Treasurer, Secretary, Enduro Committee Chairman, Hare Scrambles Committee Chairman and Motocross Committee

Chairman. Duties of the Executive Committee will be to appoint Rider Representatives and to act as a governing body for FTR on all routine and emergency matters not otherwise covered in the FTR CONSTITUTION.

#### **Article XII**

The Board of Directors shall consist of the Executive Committee and the Geographic Area Directors. The duties of the Board of

Directors will be to act as specified in the FTR CONSTITUTION.

### Article XIII

This Constitution may be amended:

1. A proposed amendment shall be submitted in writing to the Board of Directors for consideration. The amendment must be specific in that it denotes the place/places in the Constitution where it belongs and what it replaces.

2. The proposed amendment will be published on the official FTR website for a minimum of 30 days prior to the Board of Directors meeting for exposure to the General Membership.

3. The amendment must be voted upon and approved by the Board of Directors at the first meeting following said publication and presented to the General Membership at the Annual General Membership meeting.

4. A Two thirds vote of all active members in good standing present at the Annual General Membership meeting will be required to pass the amendment.

### Article XIV

#### I. Competition Committees

A. Responsibility: To score, officiate and suggest sanctions, schedules, rules and regulations governing all FTR points events. There shall be three committees, one for Enduros, one for Hare Scrambles, and one for Motocross, each with the following make-up.

B. Members: The committee will be composed of the following with each member having one vote:

1. Chairman, elected by the competition committee of those seeking the job representing the committee they will serve. The election will be held at the last competition meeting of the year and the chairman will take office at the beginning of the next competition year."

2. Referee Appointed by Chairman

3. Scorekeeper Appointed by Chairman

4. One Rider Representative appointed by Executive Committee for each of the following:

a. AA/A Displacement classes-this includes all riders in the AA and A Displacement Classes

b. B/C Displacement Classes-this includes all riders in the B and C Displacement Classes

c. Specialty A and B Classes

d. Specialty C classes and Women's classes

e. Saturday Classes-for Hare Scrambles only

f. Quad classes-for MX and Hare Scrambles only

5. Promoting Club Representatives, appointed by club and communicated in writing to the Committee Chairman by an officer of that club (One representative from each club granted a sanction for the year in question.) It will be each club's responsibility to appoint and maintain an official representative and alternates. Failure to do so will result in no representation when roll call is made at a Competition Committee meeting.

6. Chairman, Referee, Scorekeeper, and Rider Representatives shall be appointed annually during the fourth quarter of each competition year for the following competition year. A minimum of two weeks notice must be given to the general membership prior to the annual appointments for nominations to be made. Nominations shall be submitted to the Executive Committee. Appointments to unfilled committee positions may be made at any time by the Executive Committee.

C. Duties:

1. Chairman

a. The Chairman shall be a member of FTR in good standing.

b. The Chairman is responsible for calling and chairing any competition committee meeting.

2. Referee

a. The FTR Referee shall be a member of FTR in good standing.

b. The FTR Referee shall be the principal officer of any meet and shall act as general supervisor of all affairs, but shall not attempt to carry out the duties of any other official at said meets.

c. The duties of the FTR Referee shall include the following:

- Assistant referee checks the course.

- Check promoters' insurance (Enduros, Hare Scrambles and Motocross).

- Render, with assistant referee and the promoter's referee, all decisions on disqualification of riders and disqualify any rider who violates any of the rules of the meet or FTR.

- See that any major violations or problems are taken to the Enduro, Hare Scrambles or Motocross Chairman prior to the next scheduled event.

- Responsible for transferring FTR equipment to the next sponsoring Club and insure that all equipment is in good condition.

3. Scorekeeper

a. The Scorekeeper shall be a member of FTR in good standing.

b. The Scorekeeper is responsible for keeping a running account of year-end competition points.

c. The Scorekeeper is responsible for advising riders when they are moved from one Division to another.

d. The Scorekeeper is responsible for keeping an account of AMA Enduro points only for AMA-sanctioned events and to turn these points in to AMA.

e. The Scorekeeper shall publish the event results and competition standings to the official FTR website within 15 days.

f. The Scorekeeper should provide, at each event, a list of the results of the last event.

D. Meetings

1. Each committee will meet a minimum of two times per competition year. Said meetings shall be scheduled so that rule changes proposed and favorably voted upon at the earlier meeting(s) will have sufficient time to comply with the provisions of Section F. Rule Changes, Item 1. General of this Article. One of the meetings shall be in the fourth quarter of the competition year to consider sanctions for the following

competition year in accordance with Section E. Sanctions, Item 2 of this Article.

2. All other meetings will be called by the Chairman as the need arises.

#### E. Sanctions

1. A General FTR Sanction Meeting will be held in the fourth quarter of each competition year. The Board of Directors will constitute the voting members at the General FTR Sanction Meeting. The exact time and place will be published on the official FTR website at least 30 days in advance of the meeting. There shall not be more than 12 Enduros, 15 Hare Scrambles and 14 Motocross events per year sanctioned by FTR. In-state Enduros shall have first priority of sanction dates. Each promoter will have the opportunity to have a date before any promoter is considered for a second event. Any series having less than the maximum allowed sanctions may add additional sanction dates up to the maximum allowed. The sanction dates must be approved by the appropriate competition committee and the Executive Committee. This is to be for special cases only and a minimum two month's notice must be given to the general membership prior to the sanction date. Sanction fee must be submitted with the application.

2. Prior to the General FTR Sanction Meeting, the competition committees will meet to accept sanction applications for their areas of interest. The agreed-to sanctions and schedules will be presented to the General FTR Sanction Meeting for review and approval.

3. Promoters having FTR sanctions are not required to have AMA sanctions. AMA advancement points will still be kept by FTR as agreed to by the AMA.

4. It is mandatory that all promoting clubs provide liability insurance for any FTR sanctioned event, and that the Florida Trail Riders, and its officers and officials, be named on the insurance policy and/or certificate as insured parties. The insurance will be for spectator and participant liability coverage for a minimum of \$1 million.

5. Sanctions are non-transferable and non-assignable. No refund of sanction fees will be made by FTR unless authorized. All sanctions must be used on the date stated on the sanction. However, any sanction postponed by extreme hardship or weather conditions may be rescheduled by the Executive Committee. A minimum of three weeks' notice must be given to the general membership prior to the rescheduled sanction date. Sanctions cancelled by the promoter or withdrawn by the Executive Committee may be transferred to another promoter by a two-thirds majority vote of the Executive Committee. A minimum of three weeks' notice must be given to the general membership prior to the transferred sanction date.

6. FTR may refuse to grant a sanction, and may withdraw or cancel a sanction already granted, for any reason which FTR deems to be in the best interest of the sport, including, without limitation, the violation of any rules in this book.

7. Notifications required by Section E. Sanctions, unless otherwise specified, shall be sufficient if timely placed on the home page of the FTR website and the FTR Hotline.

8. There must be **at least** (6) days between Hare Scrambles Sanction Dates, Rain Date and Actual Race Dates. **Exceptions may be granted under either of the following conditions: The Board of Directors approves the exception by a two thirds majority vote at the General FTR Sanction Meeting or the Executive Committee approves the exception due to an event that is cancelled as a result of weather conditions.**

#### F. Rule Changes

##### 1. General

a. Proposed rule changes for the following competition year will be submitted to the appropriate committee for consideration. Any proposed new rules and rule changes must be specific in that they denote identify the location in the rule book (chapter, section, paragraph, title, and number), include the original wording for comparison, and identify whether these changes are rule changes or amendment changes. In addition, all other portions of the rule book which are affected by the proposed changes must also be addressed to prevent conflicts in language, intent, or rules.

b. These proposed rule changes will be published on the official FTR website for a minimum of 30 days prior to the meeting for exposure to the general membership.

c. These rules will be voted upon by the appropriate committee at the first meeting following said publication and presented to the Board of Directors for final approval.

##### 2. Emergency Rule Changes

a. A proposed rule change to be implemented immediately will be deemed an Emergency Rule Change."

b. Approval will require a two-thirds majority "YES" vote of the total committee membership and FTR Executive Committee; and does not require magazine publication prior to approval.

##### 3. Implementation

a. All new general rules will go into effect at the beginning of the next competition year.

b. All new emergency rules will go into effect immediately upon approval of this committee and Executive Committee.

#### II. Legislative Committee (Vice President)

A. Responsibility: To promote effective legislation at the city, county, and state levels to benefit responsible trail riders and to insure that trail riders interests are represented.

B. Meetings: This Committee will meet before the general membership meeting each year and make a report to the general membership. All other meetings will be called by the chairman as the need arises.

C. Responsible for keeping all FTR Charters current (Incorporation, AMA, etc.)

D. Responsible to insure that the FTR Constitution, Bylaws, and Rule Book are kept up to date.

#### III. Public Relations Committee (Vice President)

A. Responsibility: To present the responsible motorcyclist to the public with presentations, films, slides, publications. To promote the year end FTR Awards Banquet.

B. Meetings: Same as II B.

#### IV. Land Use Committee (Vice President)



A. Responsibility: To establish contact with other land users and to coordinate the trail riders' activities and interests with these groups. Also, to work with the other committees to insure that the trail riders' legitimate use of public land is not impaired.

B. Meetings: Same as II B.

**V. Members Relations Committee (FTR Secretary)**

A. Responsibility: To actively seek new members for the Florida Trail Riders and to insure that all members receive the benefit of the organization; to distribute FTR membership packets; to distribute FTR membership posters; to coordinate the efforts of the FTR Magazine staff.

B. Meetings: Same as II B.

C. FTR Magazine Staff: Responsible to publish and distribute a monthly magazine to the membership informing them of FTR business. Composition includes an Editor and an Advertising Manager. The selection of both positions shall be made by vote of the Executive Committee from among those seeking the jobs. The fee for both jobs is to be set by the Executive Committee on a year-to-year basis.

D. Scholarships: An Annual Scholarship will be awarded at the FTR Banquet to one of those FTR members or family member of an FTR member who submits the proper forms to the Selection Committee. The Selection Committee will choose the recipient using guidelines setup by the Executive Committee to award the scholarship.

## **Article XV - Bylaws:**

### **I. The order of business at organization meeting shall be:**

- Roll call
- Introduction of guests
- Reports by officers and committee chairmen.
- Unfinished business
- New Business

### **II. Appointment and duties of committees:**

- A. Committees shall be composed of volunteers.
- B. Chairmen shall be appointed by the Executive Committee.
- C. The chairman of any committee shall have charge of said activity subject to such orders as the Executive Committee may direct.
- D. Chairmen will have the power to draft additional members as needed.

### **III. Dues Sanction Fees and Head Tax:**

- A. Determined by the Board of Directors.  
Dues, Sanction Fees, and Head Tax may be changed at any time by majority vote of the Board of Directors at an official meeting of the Board of Directors. Constitution and Rule Change procedures in Article XIII and Article XIV shall not apply to the setting of the dollar amount of Dues, Sanction Fees, and Head Tax. Board of Directors, by majority vote at an official meeting shall have the authority to allocate dues for a specific purpose.
- B. Shall be reviewed each year.
- C. Dues shall be calculated on a competition year basis for general membership, **Single-event membership**, promoters and associates.
- D. Monies from head tax and team competition to be paid to FTR will apply to the purchase of the year end awards. All excess funds at competition year end will be applied to the General Fund.

### **IV. Approval of Expenditures:**

- A.** President can approve expenditures up to \$500
- B.** Executive Committee can approve expenditures up to \$2500
- C.** Board of Directors must approve expenditures over \$2500. The Executive Committee may submit this request for approval to the Board of Directors at a regularly scheduled Board of Directors meeting, or may submit the request for approval to the Board of Directors by electronic means, and obtain approval by electronic means.

### **V. Expulsion:**

- A.** A member may be expelled for conduct unbecoming of a member of the organization.
- B.** Charges must first be made in writing and the accused member be given a hearing before the Executive Committee.
- C.** A two-thirds vote of the entire Executive Committee will be required for expulsion.

## Chapter II Definitions

The following definitions and abbreviations are adopted for this rule book:

**Adult membership** - Designed for one person, this membership includes one membership card, one vote, one magazine subscription, limited to one magazine per household and the right to enter FTR competition events.

**AMA** means American Motorcyclist Association.

**Amateur meet** shall mean a contest or event in which prizes are limited to trophies and/or merchandise awards, which cannot exceed \$100 total value per prize award.

**Amateur riders** shall mean motorcycle riders not competing for cash awards.

**Beginners** - Individuals who have little experience with competitive off-road racing. This is designed as an introduction for new racers.

**cc** means cubic centimeters.

**Class** - A group of riders defined by the rider's ability, age, equipment and/or gender.

**Competition year** - July 1 through June 30.

**Complimentary banquet tickets** - This entitles the Executive Committee, scorekeepers and referees to complimentary banquet tickets for the year they are serving as officers. Past presidents are offered complimentary banquet tickets.

**Contest** shall mean a competition between two or more riders in a meet.

**Division** - This is a classification of riders based on riding ability. The Divisions shall be defined (from lowest ability to highest ability) as Beginner, C, B, A and AA.

**Emergency rule change** - For the purposes of competition rule changes, an emergency shall constitute potential loss to life, limb or property, or shall place an undue economic hardship on the FTR, a promoter or a land owner.

**Event** shall mean any one of the contests or classes in a meet.

**Evolution Class** - This equipment-defined class consists of any air-cooled motorcycle, of any displacement, manufactured prior to 1988 provided it has front and rear drum brakes. There is no limit on suspension travel.

**FTR** means Florida Trail Riders.

**Juvenile membership** – Designed for one juvenile rider, this membership includes one membership card and the right to enter FTR competition events in the Mini, 65 and Peewee classes, as applicable and available. Voting privileges are limited to matters concerning the Mini, 65 and Peewee

classes. A monthly magazine will be mailed to a juvenile member if no one else in the household is receiving a magazine.

**Life membership** (free for life) This is an honorary membership given by the FTR to an individual. All past presidents of the FTR are automatic life members at the end of their terms. Present life members are: Jim Hine\*, Gene Canham, Bill Quinn, M. J. Eberhart, Dave Bixler, Bob Goucher, Herm Stevens, Larry Dudley, Larry Shearer, Jack Huffman\*, Dr. Doug Qualls, Ken Ford, Nick Krupa, Greg Johnson, Kirk Braden, Robert Possehl, Jack Terrell, Carolyne Keylon, Hap Poneleit, J. Pat Corrigan, Margaret Knowles, Bascoom Coody, Doug Miller, Conrad Eigenmann, Terry Enyart\*, Randy Faul, Gary Wyatt, Allen Pearce, William Drymon and Ford Snodgrass.

\*deceased

**Meet** shall mean an FTR-sanctioned activity at which one or more motorcycle events are held.

**Officials** - All elected Officers, Committee Chairmen, Scorekeepers, and Referee's.

**Paid membership** - The members of the Executive Committee, scorekeepers and referees will receive free membership to FTR for one year. This membership will become effective on June 30 of the year they are serving as officers.

**Pit Riding** - Operation of unlicensed vehicles by licensed drivers through pit and parking areas for purposes other than competition.

**Promoter** shall be the club or individuals approved by the FTR, holding or organizing the meet.

**Rider** shall mean any FTR member in good standing who is properly entered and competes in a meet.

**Senior classes** - This generic term refers to all classes in which the participants are 35 years old or older. This includes Veteran, Senior, Super Senior, Master, Silver Master, Golden Master and Class 66.

**SE&TRA** - Southeastern Enduro and Trail Riders Association.

**Scholarship** - An award of not less than \$500.00.

**Single-Event Membership** – Designed for one person, this gives the right to enter a single FTR Competition event [*i.e. single weekend*]. The Single-Event Membership is valid only on actual days of the event. Single Event members may collect trophies, but shall not earn any season championship points. Single-Event members do not receive FTR membership cards, FTR forum privileges, voting privileges, magazine subscription, mailing updates, or reserved bike numbers. Single-Event members are otherwise subject to the same requirements and rules as general members. There is no limit to how many Single-Event memberships a person can use in a single season.

## Chapter III General Rules

### A. Course

1. The course must be clearly and properly marked by the promoter. In the case of Enduro and Hare Scrambles, all markers shall be day-glow red with black arrow (FTR-type) or approved by the FTR Referee. Two markers shall be placed at each major turn, followed by one course arrow immediately after the turn. Not less than one marker shall be placed for every one-half mile on straight stretches.

### TRAIL MARKINGS – See Exhibits 1-7

2. When a dangerous condition exists, danger markers shall be posted far enough in advance of the hazard to allow fast riders to slow down. An arrow pointing down shall mean caution. An arrow pointing down and in the direction of an upcoming turn shall be placed to alert riders. In locations that warrant, a 'W' wrong-way marker shall be placed.

3. A member of the promoting club must ride on the course ahead of the first riders to see that all markers are posted. Promoters must retrieve all course markers within two weeks of the conclusion of the event.

4. The official FTR course markers and FTR logos can only be used at FTR endorsed events.

### B. Competition

1. The course shall be covered by the power of the motorcycle or the muscular energy of the rider. Towing, as well as organized road repair and service (except at the "gas stop" or scheduled known control rests periods), is prohibited and violation shall result in disqualification. Riders may assist each other on any part of the course, except that a rider who ceases to be a contestant may not assist any other rider. Any rider riding the course in the wrong direction shall be disqualified.

2. Riders must remain on the marked course. A rider leaving the course can only continue in the event by returning to the point where he left the course.

### C. Pit Riding

1. Except for competition machines traveling to and from competition or practice no person shall operate a vehicle without a valid driver's license.

a. Operation by unlicensed persons is only allowed when working on the event and under the direct supervision of a licensed person.

b. Unlicensed persons riding competition machines to and from competition activities shall be accompanied by a licensed person.

2. Operation of any machine or vehicle within the parking and pit areas shall be done in a safe and responsible manner.

a. The following are expressly unsafe or irresponsible actions

i. Operating out of first gear

ii. Operating at any unsafe speed for the conditions

iii. Operating in excess of 10 mph

NOTE: While 10 mph is the absolute maximum speed you may be cited for speeds well below 10 mph if your speed is deemed unsafe for the conditions. The long standing guidance for pit travel is "First gear at walking speed".

iv. Operating without a valid driver's license unless traveling to and from your competition or practice.

v. Operating without a valid license unless escorted by someone holding a valid driver's license

vi. Operating in any manner which results in a wheel off the ground

vii. Operating in any manner that leads to a skid viii. Failure to yield right of way to any pedestrian. ix. Headlight is required after dark.

3. All unlicensed vehicles shall identify the responsible party. Licensed vehicles (with license plate mounted) are exempt from identification requirement.

a. Identification shall be by competition number plate as registered through the FTR scorekeeper.

b. The competition number plate shall meet all requirements as if on a competition machine of similar type.

c. Identification shall be readily visible and legible at a distance.

4. All event attendees shall be subject to these rules.

a. The FTR member responsible for any vehicle operated in the parking or pit areas shall be subject to discipline stipulated in this section regardless of who operated the vehicle in violation of these rules.

5. Anyone from the following groups shall have the authority to enforce these rules given they possess a valid driver's license.

a. Members of the Executive Committee

b. Members of the Board of Directors

c. Members of any Competition Committee at any event

d. Designated members of a Pit Patrol for the event be they regular Pit Patrol members or volunteering for the event only

e. The FTR scorekeeper

f. Assistant referee for the event

g. Any member of the promoting club (HS, QS and Enduro) or employee of the promoting track (MX only)

h. Land Owner or designee

i. Law enforcement personnel working the event in their official capacity

6. Upon observing an offense any authorized person shall inform the Scorekeeper, Referee or Assistant Referee at the event. The observer may inform the rider, but such is not required. If a rider fails to stop for the observer, when reasonable attempts to gain attention have been made, then an additional violation shall be recorded.

7. Any FTR member in violation of these rules shall be subject to the following:

a. Responsible FTR member is disqualified for the event.

b. If the member is not competing at the event then the rider shall be requested to leave the event property.

c. All disqualifications shall count in the year end standings.

d. A second offense within the same competition season shall result in an automatic suspension from all FTR competition for one calendar year following the date of the second offense. Multiple offenses may count even at a single event.

e. A third offense shall be defined as "Conduct unbecoming an FTR member" and shall be submitted to the Executive Committee by the Scorekeeper.

8. No competition machine shall be run, driven, tested or tuned between the hours of 10:00 p.m. and 7:00 a.m. These hours are considered "quiet hours". Any member may report this infraction to an authorized person who can then issue a

warning or ask the offender to leave the property depending on the circumstances.

#### D. Rider Classification

1. Riders shall be classified in the following divisions and classes:

##### ENDURO

Division/Class	Displacement classes	Age
AA Expert/Pro	0-Open cc	None
A Advanced	200, 250, Open	None
B Amateur	200, 250, Open	None
C Novice	200, 250, Open	None
+35 (A,B,C)	0-Open cc	35*/Above
+40 (A,B,C)	0-Open cc	40*/Above
+45 (A,B,C)	0-Open cc	45*/Above
+50 (A,B,C)	0-Open cc	50*/Above
+55 (A,B)	0-Open cc	55*/Above
+60 (A,B)	0-Open cc	60*/Above
+66	0-Open cc	66*/Above
+70	0-Open cc	70*/Above
Women	0-Open cc	None
Evolution	0-Open cc Drum Brakes & Air Cooled	None
Beginners	0-Open cc	None

##### HARE SCRAMBLES

Division/Class	Displacement classes	Age
AA Expert/Pro.	0-Open cc	13/Above
A Advanced	200, 250, Open	13/Above
+30	0-Open cc	30*/Above
B Amateur	200, 250, Open	13/Above
C Novice	200, 250, Open	13/Above
Veteran (A,B,C)	0-Open cc	35*/Above
Senior(A,B,C)	0-Open cc	40*/Above
Super Senior (A,B,C)	0-Open cc	45*/Above
Masters (A,B,C)	0-Open cc	50*/Above
Silver Masters (A,B)	0-Open cc	55*/Above
Golden Masters (A,B)	0-Open cc	60*/Above
Class 66	0-Open cc	66*/above
Women (A,B)	0-Open cc	13/Above
Women Vet	0-Open cc	40/Above
Vintage	0-Open cc 1974 or earlier	13/Above
Pre-Modern	0-Open cc (Min. 20 years old)	13/Above
Evolution (A,B)	0-Open cc Drum brakes & Air Cooled	13/Above
Evolution Senior (A,B)	0-Open cc Drum brakes & Air Cooled	45*/Above
Beginner	0-Open cc	13/Above
Sportsman-1^	0-Open cc	13/Above
Sportsman-2^	0-Open cc	13/Above
Junior (A,B,C)	86-200 cc 2 Stroke 126-250 cc 4 Stroke	13 thru 16*
Junior Girls	86-200 cc 2 Stroke 126-250cc 4 Stroke	13 thru 16*
Mini A	0-85 cc 2 Stroke 86-150 cc 4 Stroke	9 thru 14*

Mini (B,C)	17-19" wheels 0-85 cc 2 Stroke**** 86-150 cc 4 Stroke**** 17" wheels	9 thru 14*
Mini Girls	0-85 cc 2 Stroke 86-150 cc 4 Stroke	9 thru 14*
65A	51-65 cc 2 stroke*** 52-90 cc 4-stroke***	7 thru 12*
65B	51-65 cc 2 stroke*** 52-90 cc 4 stroke***	7 thru 12*
65C	51-65 cc 2 stroke*** 52-90 cc 4-stroke***	7 thru 12*
65 Girls	51-65 cc 2-stroke*** 52-90 4 stroke***	7 thru 12*
Peewee A	0-50 cc Auto clutch 10-12" wheel max.	4 thru 8*
Peewee (B,C)	0-50 cc Auto clutch 10-12" wheel max.	4 thru 8*
Quad AA	0-Open cc 4 wheels	16*/Above
Quad A	0-Open cc 4 wheels	16*/Above
Quad B Open	401-Open cc 4 wheels	16*/Above
Quad C Open	401-Open cc 4 wheels	16*/Above
Quad 0-400	0-400 cc 4 wheels	16*/Above
Quad +30	0-Open cc 4 wheels	30*/Above
Veteran Quad	0-Open cc 4 wheels	35*/Above
Senior Quad	0-Open cc 4 wheels	40*/Above
Super Senior Quad	0-Open cc 4 wheels	45*/Above
Master Quad	0-Open cc 4 wheels	50*/Above
Quad Utility	0-Open cc 4 wheels	16*/Above
Women Quad	0-Open cc 4 wheels	16*/Above
Women Vet Quad	0-Open cc 4 wheels	35*/Above
Quad Junior	91-200cc 2 stroke 91-300cc 4 stroke	13 thru 15*
Quad Super Peewee (A,B)	51-90cc 2 stroke 51-125 cc 4 stroke	6 thru 12*
Quad Peewee (A,B)	50cc	4 thru 8*

#### MOTOCROSS (See MX section Chapter XII Motocross Champion Series Classes)

\* See the following #2

\*\* Pro and Pro Am MXr's see Chapter VI, A,10

\*\*\*16' front wheel max in all 65cc classes. Two stroke play bikes (ex. PW80) up to 80cc displacement are allowed to enter 65cc classes.

\*\*\*\* Trail bikes like the Honda XR, CRF150F and Yamaha TTR series may compete with front wheels up to 19 inches in the Mini classes. This does not apply to race oriented bikes.

^ Sportsman class riders shall not be eligible for Event Trophies nor Year End points or Awards. Sportsman class riders will not receive advancement points, and will not be eligible to ride any Sunday Class at the same event they ride the Sportsman Class on Saturday. Sportsman class riders may not protest scores.

**Note 1:** Woods classes will be limited to motorcycles that qualify for typical enduro, i.e. lights, spark arrestor, etc.

**Note 2:** Beginner class riders may be promoted to "C" prior to the half-way point of the season.

**Note 3:** Pro and Pro Am riders are required to compete in the "AA" class.

2. A rider may elect to ride in any of the age determined classes, **Veteran (+35)**, **Senior (+40)**, **Super Senior (+45)**, **Masters (+50)**, etc., if they become the legal age for that class during the competition year, July 1 thru June 30. The age of Youth, Junior, Mini & Peewee riders for the entire year will be the rider's age on the date they run their first event of the competition year, except Motocross, which shall be based on the age the rider is on January 1. Proof of age is required. The Peewee, 65cc and Mini classes will be considered to be Juvenile classes. Juvenile classes shall not compete on the same course at the same time as any Adult class. In Hare Scrambles, riders in Saturday's Junior and Juvenile classes defined as Peewee (A,B,C), 65cc (A,B), Mini (A, B, C) , shall not be eligible to enter any division or class on the Sunday schedule. In Quad Scrambles, riders in Saturday's Peewee and Mini classes shall not be eligible to enter any division or class on the Sunday schedule. Riders under 13 years of age shall not be eligible to enter an Adult class.

3. In cases where there is doubt concerning rider classification, it may be set by the FTR Referee at any FTR-sanctioned event. If a rider wishes to lower their classification, they may petition the Competition Committee for reclassification to the next lower class. If they are determined to be non-competitive after competing in three events in the advanced class, the committee may vote to reclassify them.

**E. Trophy Guidelines**

1. FTR recommends the following minimum number of trophies to be awarded at each event (with the exception of MX):

High Point	1 Trophy
(Enduro & Hare Scrambles Only)	
A division	3 deep per class
B division	4 deep per class
C division	5 deep per class
All Senior classes	3 deep per class
Vintage	*
Evolution	*
Quads	*
Women	*
Peewee	*
Mini	*
65	*
Beginners	*

\*Determined by the number of entries in previous events

Motocross event trophies to be as specified in D.1. or 30% of entries. It is recommended that there be at least six riders in a class for the promoter to be required to provide trophies. Regardless of the number of entries, all FTR classes will be given FTR points at all runs, but classes may be combined (with smaller displacement bikes moving into the larger displacement class except in open class, where larger displacement class may be combined with the next lower displacement class) for trophy presentation, with the exception of Senior and Women's divisions. 2. For the purpose of creating division status, FTR recommends that A division

trophies be larger than B division trophies, and B division trophies be larger than C division trophies. It is also recommended that the Women's division trophies be comparable to B division trophies.

**F. Teams (Motocross)**

1. A team shall consist of not less than three riders nor more than five riders. Riders may compete on only one team. They must be entered as a team before the meet begins. The best three scores will be used to determine the winning team for that event. In case of a tie, the 4th and 5th place riders placing will be used to determine the team winner. Team members may change, but the team name may not.

2. Teams will be entered on standard FTR team forms before the end of sign up. This information must be posted on the "scoreboards" for future reference for team scoring.

3. The team standings for the overall winner of the team trophy will be determined by the formula for individuals; i.e., if a team wins the event, they receive 50 points. The second place team receives 47 points, etc., as above.

4. Point system for team scoring:

1st place in class	50 points
2nd place in class	47 points
3rd place in class	45 points
4th place in class	43 points
5th place in class	41 points
6th place in class	40 points
(etc. - one point less per position)	

5. The Year-End winner will be determined by counting the team scores from all races on the season schedule, less one.

**G. Worked Run Credits**

1. All issues regarding Worked Run credits must be submitted no later than the first of the month after the race results are published in the Magazine, or the date specified in any special mailing.

**H. Year-End Awards**

1. FTR High Point, Team and class winners will be determined at the end of the competition year and will receive awards at the annual FTR awards banquet.

2. Winners for the Year:

a. Total points will be determined by the best combined scores in 70% of the events sanctioned by FTR. Rounding will be done to the nearest whole number with 0.50 being rounded up. In addition, Motocross total points would be determined by the best scores in 80% of the events sanctioned by FTR.

Rounding will be done to the nearest whole number also. To qualify for year-end awards in the FTR Series, a rider must enter at least 50% of the sanctioned events.

b. Total points toward FTR High Point will be determined by the best combined scores, regardless of the class in which they were accumulated.

c. Total class points will be determined by the best combined scores in that class.

d. High Point winner will be given first in class as well as the High Point award at the FTR banquet.

e. Total points toward FTR Motocross Overall Series High Point will be determined by the best combined scores of a rider with an Adult membership, based on best 70% in each of the rider's classes. Year-end Motocross overall awards will be

based on overall total points in a single Adult class during the season for one award in each of the A, B, and C divisions. To qualify for yearend awards in the FTR Motocross Series, a rider must enter at least 50% of the sanctioned events.

f. Year-end awards will be given for the Quad classes in the Hare Scrambles series while the Quad Scrambles series is suspended.

3. FTR points are not transferable from one displacement class to another if the rider elects to change during the FTR Championship Series. "B" or "C" riders who are reclassified during the year may transfer points to the corresponding higher division displacement classes.

4. The number of trophies per class will be determined by the following:

Beginner classes do not receive year-end awards.

Eligibility for all other classes will be determined by:

a. A rider must score points in at least 50% of the sanctioned events, including a worked run, where applicable. If no one in the class scores in at least 50% of the sanctioned events, no one in the class gets an award. Riders who score in less than 50% of the sanctioned events will always be awarded lower final standings than those riders who participate in the required number of events, regardless of points earned.

b. All eligible riders will receive year-end awards, with the following limitations

No more than 10 awards per class for B and C Division riders, including Senior class riders and any other classes not specifically listed in this rule.

No more than 5 awards for AA and A Division riders, including Senior class riders.

All Peewee riders will receive year-end awards. Those finishing lower than 10th place will receive a participation award.

c. The top three Teams receive awards.

5. Year-end ties in Enduros are to be broken by adding up the overall finishing positions of the riders in their 70% runs. The rider with the lowest total score wins. Year-end ties are not broken in Hare Scrambles or Quad Scrambles. Motocross year end ties are broken by best moto finishes during the season.

#### **I. General Duties of a Promoter**

1. All conditions of entry must be contained in the advertisement and/or the entry application, such as number of trophies per class, mileage, if inspection sticker is required, number of gas stops, type of scoring, average speed, date of drawing and phone number where information about the meet can be obtained. In Motocross, the track promoter shall act as the assistant referee.

2. Provide a sufficient number of police or marshals to provide safety to the riders in any case where a public road is crossed or entered.

3. A promoter must not make false announcements, advertise or otherwise disseminate information to the press or public which is incorrect or misleading.

4. Agree, in writing, to comply with the rules set forth in this book.

5. Follow all rules made by the competition committee and all FTR rules pertaining to events.

6. Provide Assistant Referee for the Enduro, Hare Scrambles or Quad Scrambles event preceding their sanctioned event.

Assistant Referee must be an FTR recognized A, B or experienced rider.

7. Promote the event at the scheduled time and in a manner consistent with FTR policy.

8. "Minors Understanding and Release Forms" are mandatory at all FTR events.

9. Use FTR Day-Glow arrows for all course markings.

10. Must have approval to use the land.

11. Hand out the current FTR Pit Riding Policy to all participants arriving at the gate.

#### **J. Fees**

1. The FTR sanction fee for Enduros is \$200. The FTR sanction fee for Hare Scrambles is \$700. This fee includes the cost of printing a flyer advertising the event in one magazine. If the club or promoter does not submit a flyer or submits a flyer after the cutoff date for the magazine preceding the event, no refund or financial consideration will be due to the club or promoter. The FTR sanction fee for Motocross is \$75 and does not include advertising. If the sanction fee is not paid at the Competition Committee Sanction Meeting, the date shall be available to another promoter.

2. Any AMA sanction fees are the promoter's responsibility.

3. Any promoter committing any major rule violation can be fined \$100 by FTR.

4. **Head Tax for Hare Scrambles: \$4 per rider to be applied to year-end awards; \$4 per rider to update, maintain and staff the electronic scoring and sign up equipment and the radio communication system; \$1 per rider administrative fee; and \$1 per rider for safety team equipment and supplies for a total of \$10 per FTR rider. Enduros and Motocross - \$4 per FTR rider to be applied to year-end awards and \$1 per FTR rider administrative fee for a total. At in-state enduros an additional fee of \$2 per rider will be collected to update and maintain scoring equipment.**

5. Team Entry fees will be \$1.00 per rider, to be applied to yearend awards.

6. FTR may use monies from the Land Use Fund, to reimburse the promoting FTR clubs, for the required insurance fees imposed by St. John's River Water Management District, for permitted work days (not to exceed four days).

#### **K. Riders and Eligibility**

1. FTR-sanctioned events are open to all qualified FTR members. Current FTR membership is required of all participants except multi-sanctioned enduros. At multi-sanctioned enduros, all participants must be a member of one of the sanctioning organizations, except Florida residents who must be a current member of FTR. AMA membership is not required at any event unless the event is AMA sanctioned and AMA membership is required by the promoting club.

2. It is the rider's responsibility to stop at all check points so that the checkers can properly mark their score card.

3. All FTR members attending or participating in any FTR event will conduct themselves as responsible motorcyclists. Any rider accused of the following and upon a two-thirds majority vote of the competition committee will lose his membership for a period of one year and the competition committee will file a report with the AMA if the rider is an AMA member.

a. Removing course markers.

- b. Intentionally altering any score card.
  - c. Conduct unbecoming an FTR member.
  - d. Entering an event under a false name or in a lower division.
  - e. Blatant course cutting.
4. Any FTR or AMA member who intentionally defaces, changes, or in any way alters the course markers, shall be PERMANENTLY suspended from the FTR.
  5. At any FTR sanctioned event, any member or individual, who upon the decision of no less than three FTR officials may have their FTR membership suspended and/or be required to leave the property, due to that members individual behavior, if deemed by those FTR officials to be abusive, reckless, harmful, threatening or unbecoming.
  6. Any active FTR member is responsible for all guests and members of their party.

**L. Competition Apparel & Equipment**

1. A helmet must be worn in all events. Helmets must carry a Safety Helmet Council of America serialized sticker and be on the SHCA approved list. All helmets must be full coverage or full facial units (no shorties).
2. It is recommended that footwear, a minimum of eight inches high and either laced, multi-buckled, zippered or especially designed and constructed for leg and foot protection be worn. Boots must be worn at all events.
3. It is recommended that shatterproof goggles or face shields be worn. Some type of eye protection must be worn by all riders.
4. It is recommended that protective pants be worn. These may be of leather or other durable material subject to approval by the referee. No shorts. It is also recommended that long-sleeved shirts be worn.
5. Rules 3 and 4 above are recommended, but any rider without proper protective apparel, as judged by the FTR Referee, may be withheld from starting until the problem is corrected and the rider is released by the FTR Referee.
6. Equipment

Vehicle displacement classes are as follows:

**Enduros:**

0-200 cc	A, B, & C
201-250 cc	A, B, & C
251-Open cc	A, B, & C
0-Open cc	AA, +35, +40, +45, +50, +55, +60, +66, +70, Women, Evolution, Beginners

**Hare Scrambles:**

0-200 cc	A, B & C
201-250 cc	A, B, & C
251-Open cc	A, B, & C
0-Open cc	AA, +30, Veteran, Senior, Super Senior, Master, Silver Master, Golden Master, Class 66, Sportsman-1, Sportsman-2, Women, Women Vet, Vintage, Pre-

Modern, Evolution, Evolution Senior, Beginners, Quad AA, Quad A, Quad +30, Veteran Quad, Senior Quad, Super Senior Quad, Master Quad, Women Quad, Women Vet Quad, Quad Utility

86-200 cc 2 Stroke, 126-250cc 4 Stroke  
0-85 cc 2 Stroke 86-150 cc 4 Stroke

51-65cc  
51-90cc

0-50 cc

0-400 cc  
401-Open

91-200cc 2 stroke, 91-300cc 4 stroke

Junior  
Mini A, B, C,  
Mini Girls  
65 A, B, C  
Quad Super  
Peewee  
A, B, C Peewee,  
Quad Peewee  
Quad 0-400  
Quad B, C  
Quad Junior

**Motocross:** (See MX section Chapter XII Motocross Champion Series Classes)

Classification will be made according to manufacturer's piston displacement marked by the manufacturer on the engine cylinder. Displacement may be increased to the maximum allowable for that class. Cylinders may be over-bored to .080 inches regardless of displacement and still remain in the original class. See AMA rule book -"Protests and Offenses." Hare Scrambles Quads may run oversize piston and cylinder bore combinations but must run in the class of that displacement.

7. Sound Standard for all FTR Events. All FTR competition vehicles are subject to be tested in accordance with the SAE 1287-July 98 (or latest version) testing procedure (20" stationary test). Maximum permitted sound level per this standard shall be:

Enduro	96 dB(A)
Hare Scrambles	96 dB(A)
Motocross	98 dB(A)

All competition vehicles manufactured from 1987 and prior years shall be exempt from this standard.

8. Spark arrestors are mandatory on all competition vehicles in the Hare Scrambles and Enduro series. Vehicles competing in the Peewee classes shall be exempt from this requirement. The spark arrestor must be approved by the USFS. A rod test may be performed to verify the presence of the spark arrestor.

9. All race vehicles must pass Official FTR inspection for rule compliance [Tech Inspection] prior to participating in any FTR event including practice. Any rider racing a vehicle that has not passed Tech inspection for the event will be subject to disqualification [DQ].

**M. Official Duties and Powers**

1. Assistant Referee:

- a. The Assistant Referee shall be a member of FTR in good standing.



**b.** At Hare Scrambles only the Assistant Referee shall ride the course on Saturday before the meet or at a time agreed to with the promoter not to exceed one week before the event, and shall check the course for bottle necks. If any are found, the Assistant Referee shall instruct the promoters to alter the course. Check for proper marking and danger markers where necessary.

## **2. FTR Responsibilities:**

FTR will provide two official representatives for each event who will perform the following duties:

**a.** Check each entrant who signs up the day before or the day of the event for FTR membership and rider classification.

**b.** Provide FTR application blanks, handle all FTR paperwork, and collect all money necessary to sign up new or renew FTR members.

**c.** Assist the promoter in any way possible to insure a good event.

**d.** Act as the official FTR referee.

**e.** Any FTR representative who feels a promoter has acted irresponsibly must file a written report with all details to the FTR Enduro, Hare Scrambles or Motocross Committee Chairman within 10 days.

**3.** An FTR representative will collect all team money and forward to FTR Treasurer for year-end trophies. They will also verify the promoter's scoring of the teams and presentation of the team trophy.

**4.** The FTR will provide check point flip cards, and check point flags for Enduros and stop watches and caution flags for Hare Scrambles. It is the promoter's responsibility that this equipment is returned in good working order and each divisions referee is to transport and maintain the equipment.

## **N. Pre-Modern motorcycle technical definition**

### **1. Vintage Technical Requirements**

**a.** Motorcycle may have no more than 7 inches of front wheel suspension travel and 4 inches of rear wheel suspension travel, measured at the axle.

**b.** Any shock absorber may be used, providing the technology and design was commercially available in 1974. Legal shocks include, but are not limited to: Armstrong, Betor, Foxshox, Koni, Mulholland, S&W, Bilstein, Curnutt, Girling, Marzocchi, Redwing, Works Performance

**c.** Illegal shocks include but are not limited to:

**1.** Any shock with a remote reservoir (i.e. connected with a hose).

**2.** Any post 1974 technology, such as Fox Air Shocks, etc.

**3.** Any shock that provides more than 4 inches of axle travel.

**d.** Single shock motorcycles are prohibited.

**e.** Engine modifications must be consistent with the spirit of the period. Reed valves may be used only if they are OEM or available in aftermarket kit form in 1974 or earlier.

**f.** OEM or other carburetors of the period are strongly encouraged. Flat-slide or "LECTRON" type Carburetors are not permitted. Fuel injection is not permitted. Modern smooth bore carburetors are not permitted.

**g.** Foot pegs are to be of folding type.

**h.** Disk brakes are prohibited (except Rokon OEM on a Rokon).

**i.** For suspension and engine technical requirements refer to the A.H.R.M.A. rulebook.

## **2. Evolution Motorcycle Technical Requirements**

A motorcycle will be considered legal for the Evolution class if it is an air-cooled motorcycle, any displacement, manufactured prior to 1988 provided it has front and rear drum brakes.

There is no limit on suspension travel. Modifications must consist of OEM or aftermarket parts that were available prior to 1988.

## **O. Disqualification and Recourse**

**1.** All disqualifications issued during an event shall be recorded by the referee. The record should contain all pertinent information needed for review of the disqualification by the competition committee. This information should include identification of involved parties and witnesses and shall state the nature of the disqualification. The log shall be forwarded to the FTR Scorekeeper for consolidation throughout the competition season.

**2.** Any disqualified rider may file a grievance with the appropriate competition committee. The grievance shall be filed in writing with the series Referee or Committee Chairman at the event the disqualification was issued.

**3.** The Committee Chairman shall bring the grievance before the committee within 60 days and shall notify the disqualified rider and disqualifying official of the time and place of the meeting.

**4.** The Competition Committee shall consider the grievance in an open meeting, allowing time for both rider and official, and resolve the grievance with a vote. The vote shall result in only one of three options:

**a.** Disqualification stands as issued

**b.** Disqualification stands - modified to remove any series standing inclusion requirement

**c.** Disqualification is repealed and scores to be reinstated.

**5.** The decision of the Competition Committee shall be final with no further recourse open to either rider or official.

## Chapter IV Enduro Rules

### A. General

An enduro is a meet where speed is not the determining factor, and where a time schedule has to be maintained. It is conducted over little-used roads, trails, footpaths, and all other types of terrain which may be negotiated by the power of the motorcycle or the muscular energy of the rider. Written permission should be obtained from the owners of private property, or land manager in case of public land, where the course crosses such property. The use of active railroad right-of-way or facilities is not recommended.

1. No enduro shall be of more than 24 hours of continuous riding. No event shall be considered a two-day run if the total mileage is less than 60 miles per day.
2. Each major turn shall be identified by number and mileage to conform to the route sheet.
3. There must be at least one "Gas Stop" per 45 miles. Known controls or layovers must be listed as either a known control, or a gas stop on the route sheet.
4. National Enduro rules for scoring emergency checks may be used as the methodology for scoring FTR enduros if an event is a "National Enduro" or "Co-Sanctioned" enduro or an "FTR Enduro." The National Enduro Series defines "scoring" as follows: Emergency checks will be scored by total minutes and seconds, and are calculated from the top of a riders due minute. Scores will be tabulated by the actual number of minutes and seconds that a rider is late to an emergency check. Example: if you are due on minute 20, and come in at 21:30, your score is 1 "Minute" and 30 "Seconds" not 1 "Point" and 60 "Emergency Points."

SERA defines this methodology as follows:  
Emergency checks will be scored by total minutes and seconds and are calculated from the top of a riders due minute. Scores will be tabulated by the actual number of minutes and seconds that a rider is late to an emergency check. Example: if you are due on minute 20, and come in at 21:30, your score is 1 "Minute" and 30 "Seconds" not 1 "Point" and 60 "Emergency Points". The riders score will be an accumulation of minutes and seconds totaled together. The club MUST announce that their event will be run as a "start control scoring format" on the event flyer.

FTR Enduros define the methodology as per the hosting club's preference giving the hosting club the option to score via the National Format or via the legacy format described in detail within latter sections of this rule book. This flexibility allows the club to decide the best methodology based upon resources available and other variables. The Scoring Methodology will be captured on the sanctioning form, should be on the flyer and should be disclosed at the riders meeting. Our event calendar will publish what is captured on the sanctioning form and will update the information as the enduro nears in the event the club changes scoring methodology. It is the club's right to choose a methodology and the rider's right to ask the hosting club for clarity at the rider's meeting.

5. It is mandatory that all promoting clubs provide spectator and participant liability insurance coverage of a minimum of \$1,000,000 for sanctioned enduros, and that The Florida Trail Riders Inc., its officers and officials be named in the insurance policy as an insured party.

### B. Classification of Riders

1. There are thirteen (13) rider divisions:

AA Expert  
A Advanced  
B Amateur  
C Novice  
  
+35  
+40  
+45  
+50  
+55  
+60  
+66  
+70  
  
Women  
Beginner

2. The effective date for all year end promotions is the last day (June 30th) of the competition season. Riders must enter the highest classification (A, B, or C) attained in any enduro sanctioning organization.
3. The Enduro Chair, Referee and Scorekeeper will set the classification of any rider new to the series that does NOT have a FTR ranking in Hare Scrambles or Enduros and does NOT have an equivalent ranking from another series. The Enduro Chair, Referee, and Scorekeeper may adjust the classification as needed of any rider that was given his initial classification by the committee.
4. Beginner promotion rules are, after 3 top 5 finishes or after starting 8 events the rider is promoted up to the proper FTR class. All FTR Hare Scrambles riders will ride in their assigned Hare Scrambles Class for FTR Enduros, prior to any enduro ranking being established. Any disputes, concerns, initial or reclassification will be determined by decision of Enduro Committee chairman, referee and scorekeeper prior to riding a FTR Enduro.
5. Advancement Sets - There will be two sets of advancement percentiles calculated, one for all displacement riders, and a second for the following specialty class riders: +35, +40, +45, +50, +55 and +60. A percentile will be calculated for each rider, at each race. At the end of the season, the rider's percentiles will be averaged, and this will be the rider's advancement percentile for the season. DNF and Work Run Credits will not count in the average calculations.
6. All riders in all classes (except for Women, EVO, Beginners and Vintage) are counted in one of the Advancement Sets.
7. The Ranking System for promoting riders in all classes in advancement sets is defined as follows:
  - a. All Riders in both advancement sets will be assigned an overall event number (event rank) based on their finish position against all FTR riders competing in the event within their advancement set. Event rank numbers will be calculated in descending percentage order, from overall winner to final rider.
  - b. Each FTR rider's event finishing positions (event ranks) as published in the FTR magazines at season end, will be averaged to determine a ranking number after deleting worked points and rank numbers awarded for a DNF. If only one completed enduro is published, a ranking number will not be established and the rider will remain in the same division for the upcoming season.

- c. All riders in each advancement set will be stacked in numerical order for each class by their average ranking number. Any rider not receiving a ranking number is not considered in the stacking and will remain in the same A, B, or C division in the next season except as defined in (i) below.
- d. Classes are then divided by the ratios of 25% for A, 35% for B, and 40% for C, except **+55 and +60**, which is divided 40% A and 60% B, based on the total number of riders in the class receiving average ranking numbers. When fractions exist based on the 25/35/40 or the 40/60 in **+55 and +60** multiplication factors, they will be rounded to the nearest whole number with .500 to .999 to the next higher whole number and below .500 to the next lower whole number beginning with the A division. Any rider promoted more than one division (C to A) will be moved only one division after stacking is completed. Any rider demotion will be by petition of the Enduro Committee by the individual rider wishing to be demoted.
- e. Promotion to AA - The 2 (TWO) highest ranked racers as ranked in the top 20 at season's end are promoted to AA in FTR Enduros ONLY. This AA ranking applies to FTR Enduros and is not evidence to apply to their sanctioning bodies or other disciplines of racing within the FTR due to our small sample size. Any rider promoted to AA has the right to petition the competition committee to revoke the promotion.
- f. Riders ranked as "A" will ride in any "A" class for which they are age or displacement qualified. Riders ranked as "B" will ride in any "B" class for which they are age or displacement qualified. Riders ranked as "C" will ride in any "C" class for which they are age or displacement qualified.
- g. Riders moving to a new specialty class from the previous year will use the ranking number established in their old class to determine the A/B/C level to ride in the new class. Riders moving to a new specialty class from the previous year shall not be promoted or demoted more than one division (A to C or C to A).
- h. Riders may reclassify themselves to a higher (but not lower) division by notifying the FTR Enduro Scorekeeper, and take 90% of their championship points any time before 50% of the sanctioned runs, but zero championship points after 50% of the sanctioned runs. A rider can only be reclassified to a lower division by petitioning the Enduro Committee.
- i. Classification of Hare Scrambles riders to the Enduro Series Specialty Class can be determined by decision of the Enduro Committee Chairman, Referee and Scorekeeper prior to establishing a ranking number.
- j. Riders must remain in the highest division attained using the ranking system for at least 1 racing season. A rider has the option to petition the competition committee to prove that he should not have been promoted.

### C. Course Rules

1. The persons who actually lay out the course are prohibited from participation. No rider may ride the course prior to the start of the event under penalty of disqualification.
2. Riders must comply with all local and state laws, regulations, and speed limitations. Any rider receiving a moving traffic violation during the event shall be disqualified.
3. The course shall be covered by the power of the motorcycle or the muscular energy of the rider. Towing, as well as organized road repair and service (except at the "gas stop" or scheduled known control reset periods), is prohibited and violation shall result in disqualification. Riders may assist each other on any part of the course except that a rider who ceases

to be a contestant may not assist any other rider. Any rider riding the course in the wrong direction shall be disqualified.

4. A route sheet shall be furnished by the promoter to all riders not less than one hour before the start. It shall give the key time for the start, key time for all known and start controls, as well as the exact mileage and schedule in miles per hour between turns and the direction of the turn. It should indicate by mileage and official gas stop: "as well as gasoline available point." The mileage must be marked on the trail at major turns. Any mileage changes by Acts of God, land owners or forestry management which would shorten mileage to under 60 miles must be approved by the majority of the riders at the riders meeting to allow the event to be an FTR points paying event.
5. The promoter shall realistically estimate the number of starting positions (pre- and post- entries) for their enduro, by the number of entries in their enduro last year, or by using the average number of entries in the enduros prior to theirs. The promoter then needs to decide the number of starters on each row. No more than five riders shall leave the starting line per minute. If five leave each minute, on the average a rider will arrive at a check every 12 seconds. That is about all a check can handle. Starting row assignments will be determined by random drawing. At the promoting clubs' option, and if stated in the flyer for the event, riders may request a specific starting row. If the promoting club elects this option, it shall assign a cut-off date for the pre-entry drawing. On this date only, all entries received will be drawn, and if their requested row is available, it will be assigned. If the row requested has already been filled by random drawing the entry will be assigned the closest available row. All post entries will be drawn at random from the remaining numbers at the time of sign up. No changes will be allowed. A rider may only enter the event once.
6. Anyone may ride together on the same row. Riders must request on entry form if they wish to ride together. Riders who post-enter and wish to ride together must sign up together.
7. AA riders may, at their option, select starting rows between 25 and 35. In order to receive the row of his choice, the rider must pre-enter and put his row selection on the entry form to inform the promoter of his selection.
8. At the starting time, which is one minute after the printed Key time, the starter shall dispatch a group of riders as determined by the drawing. Riders may not swap starting times.
9. Riders must remain on the marked course. A rider leaving the course can only continue in the event by returning to the point where he left the course.
10. Motorcycles will be impounded at a two-day enduro. Bikes will be impounded only for the time period between the final checkpoint of the day and the rider starting time on the second day. Each rider will be allowed to enter the impound area 30 minutes before their starting time on the second day of a two-day enduro for the purpose of preparing his bike for the run. Only riders will be permitted to work on the bike while in the impound area.

### D. Checking Stations

1. Checking stations shall use the following flags, which shall measure not less than 18" by 18":

Start Control	yellow & white flag
Secret Check	red & white flag

Emergency Check	green & white flag
Observation Checks	white flag
Known Control	yellow flag

All flags must be conspicuously displayed and will designate the exact checking point. Check time shall be taken the instant the rider's front wheel shall have arrived opposite the flag and not before.

- The finish point must be a Known Control, and if the scheduled rest stop or gas stop is also a check point, it must also be a Known Control and so announced at the riders meeting.
- Checking stations shall not be more than 40 miles apart. If the meet is less than 100 miles long, the minimum distances from other checking stations shall be three miles. Secret checks shall not be less than two miles before nor three miles beyond a gas stop. For meets 100 miles or more in length, Secret Checks shall not be less than three miles from a Known Control, Secret, or Emergency Check, and may not be less than three miles apart. Emergency Checks may be combined with Secret Checks and in such cases, the flags displayed together and separate scores computed as though the checking stations were operated separately.
- At all Checking stations, except Observation Checks, there shall be at least three officials. One shall act as timer who calls the time and number of the rider as they reach the flag. The second checker shall write the time on the riders score card and the third record the time and number in the log. In case of a checker's error, the Referee shall determine the correct time using the score card and checkers log. A register of riders and times must be kept at all checks in case a question arises at the end of the meet. Any rider changing time or entering their own time will be immediately disqualified.
- The starter's time shall be official. If any timing device is found to be inaccurate by more than 5 seconds, or if any timing device fails, such Checking Station shall be considered an Observation Check only.
- All Checking Stations shall be opened 30 minutes before the due time of the first rider, and shall remain open until one hour, 59 seconds, after the last rider shall have been due to arrive and depart. Upon the close of each Checking Station, the checking sheet shall immediately be signed and delivered to the place designated by the Referee.
- The standard variation for mileage accuracy is no more than .05 of a mile as measured from the last known mileage posted on a mile marker or on the route sheet. If a Checking Station is in question because course markers are missing or altered, it shall be declared official if 50% of the riders in contention from the previous check arrive at the check in question.
- The mileage at any Secret Check must be computed from the last Known Control and the time there to must be computed to a whole minute. Any rider arriving at a Secret Check within the 59 seconds after the even minute shall be recorded as arriving on the whole minute. Riders must not stop within sight of a Secret Check or their time will be taken the instant they stop forward motion. Putting the foot down shall not indicate point of timing, but time will be taken if the rider zigzags or paddles to stall time.
- Emergency Checks must be used for the purpose of breaking tied scores. The time to an Emergency Check must be computed to a whole minute. The time taken at an Emergency Check shall be taken in seconds. In case of a tied

score, the rider checking closest to 30 seconds within their minute due shall be the winner. If more than one Emergency Check is used, the total emergency points lost shall be used to determine the winner of the tied score. In case a tie still exists, the Emergency Check closest to the end of the meet shall be used to break the tie. (See illustration of Emergency Check timing.) If a tie still exists, the rider with the lowest score at the last check and working back through the run will take the win, (in case of a run with the possibility of tie scores, it is recommended to have more than one Emergency Check.) **10.** The mileage to all time checks must be such that the riders are due on a whole minute.

## **ILLUSTRATION OF EMERGENCY CHECK TIMING – See Exhibit 8**

### **E. Mini Enduro Series**

- A Mini Enduro can be held at either an Enduro or a Hare Scrambles event on the Saturday before the main event.
- The series is to be promoted by FTR clubs on a voluntary basis.
- Mini Enduro classes and trophies are to be determined by the voluntary clubs holding the event. It is recommended that every participant receive an award of some type. The following classes are to be used as a guide:  
Jr A & B  
Mini A & B  
Pee Wee A & B
- At this time, the Mini Enduro series is not a part of an FTR championship points paying year end series and is not an FTR sanctioned event.

## **Chapter V Enduro Scoring**

### **A. General**

- It is recommended that promoters have a meeting before the event with all the checkpoint workers, scorers, and anyone else connected with the event; and that these rules be read to them. Make sure they know when a rider is supposed to be "timed" at a check and what a rider can and cannot do approaching a check. Make sure the checkers know what to expect at a check. Set up a check and have some people ride into it. If indoors, pretend they are on motorcycles.
- For faster scoring, the following number system is recommended: Use a three-digit number. The last two digits indicate the minute the rider starts. The first digit is the column or position on the starting line. The rider's class must be on their score card.
- No more than five riders shall leave the starting line per minute. If five leave each minute, on the average a rider will arrive at a check every 12 seconds. This is about all a check can handle.

### **B. Time**

- NEVER** change the starter's clock after the run has started or any check clock after the first riders are due.
- Clocks: Digital clocks or flip cards shall be used so the rider can easily see the time. Digital clocks sometimes get bumped over a digit or two on the way to the check. If the checker will set their watch to the time on the digital clock (to the second)

before they leave, and compares them when they arrive at the check, they will see the error and can correct it.

3. Key Time is generally 9:00 AM. The first row (row 1) generally leaves one minute after Key Time: 9:01, not 9:00!

4. The clocks at each check should be set so 9:01 (if 9:00 is Key Time) appears for the first row at each check. This greatly simplifies scoring. Example: First check is 5.6 miles out and should take 14 minutes to ride. Therefore, the clock for the first check is set 14 minutes before Key Time, or 8:47 when the starter's clock reads 9:01. A list of all possible mileage's and times up to 100 miles is available from FTR.

5. Clock errors: A clock can be off no more than 5 seconds at the end of the event. If a clock is found to be in error, the check shall be made an Observation Check.

### C. Scoring

1. Score Card: The rider shall be issued an FTR approved score card. It should be secured to the front fender. The rider may elect to keep the score card elsewhere as long as the rider presents it to the checker. The score card is a must! It will provide the rider's time at every check on a single card and there is no other way this can be done.

2. Scoreboards: Clubs should plan to either create poster boards or use the FTR electronic system scoring prior to their event.

a. For clubs using the electronic system, rider entries including class and row information, route sheet, and scoring type (timed or restart) shall be posted on the website publicly at least 48 hours before an event key time. After the event is complete, scores shall be viewable at the event from an electronic display, or by printed reports or via other media as appropriate (SMS message, website, digital feed, etc.)

b. If not using the electronic system, then poster board Scoreboards shall be filled out prior to the event with riders listed by class on each sheet. List the order by rider number in numerical order, with rider's name next to his number. These boards shall be posted at the event so all riders can view them before, during, and after the run. A space in front of them should be roped off to allow room for scoring to be posted.

3. Each rider shall start with a score of zero, and shall be penalized one point for each minute late in arriving at a Secret Check. The rider shall receive two points for the first minute early and five points for each additional minute early. The penalty points for arriving early may be eliminated if the promoter so states in the advertisements.

4. A rider shall be penalized one point for each second early or late at an emergency check. These points are for ties only and are not to be confused with points in the above paragraph.

5. A rider without their number and time on the checking log at the check in question, and all previous checks, is disqualified unless they can show proof of his passing that check and the time arrived.

6. The start will be the first check! It shall be a Known Control and a rider shall be penalized one point for every minute late in departing from the starting control. As each rider leaves the start, their number shall be recorded and their score card shall be marked with the time of departure.

7. A rider shall be penalized one point for every minute late arriving at a known or start control. A rider leaving a known or start control before his scheduled departure time will be penalized 2 points for each minute he is early. There shall be no penalty for arriving early at a known or start control unless

the rider is 15 minutes or more early: then the rider is disqualified.

8. No penalty shall be recorded at an observation check. However, at any checking station, if the rider is 15 minutes or more ahead of their schedule at that point, or is in excess of one hour and 59 seconds late at such point, or has cut the course, the rider shall be disqualified at that point. The rider shall be credited with the mileage to the last timed check and shall be eligible for awards on that basis. For purposes of clarification, over one hour shall mean after 60 minutes and 59 seconds.

9. Anomaly Scores at an event – Any rider receiving a score that is deemed “Unreasonable” relative to past performance, may be protested. Any riders protested for having an unreasonable score will receive an average of their class (for that test) instead of the “unreasonable” score.

10. Results must be posted at least one-half hour before they become official. Any scoring protests shall be filed during this time. An Enduro must be protested within two weeks after the run if any rider wishes to do so.

11. Any rider found cheating on their score in any way shall be disqualified for one year from that date.

12. All records from each FTR Enduro shall be given to the FTR scorekeeper:

- a Scoreboards
- b Score cards
- c Checkpoint books
- d Entry forms
- e List of the people who worked in the event (did not ride the event)

13. If a promoting club imposes a division cut off for Displacement, Specialty or Women's Classes: If a class division (A, B or C) is not required to negotiate the entire run during a specific event, including all the checks, full FTR points shall be awarded only through the last check completed up to and including the cutoff point within the one-hour time limit for that class division. If a rider wishes to ride the entire run, beyond the required distance, that rider will not receive additional FTR position points. The trophies for the event will still be awarded to the best score for the required distance only. The disqualification rule after one hour and 59 seconds late to any check still holds for all classes and divisions.

14. For an Enduro to count toward FTR championship Enduro points, it must have at least two valid, legal Secret Checks standing after the protest period is over.

15. A roster of three to a maximum of eight members must be registered with the Enduro Scorekeeper before their first event begins. Each member must sign the roster agreeing to be on the team. A minimum member roster may be increased at any time thereafter to the maximum eight members. A member may be deleted after such member has missed 3 events and may be replaced at any time thereafter. Roster changes must be submitted in writing to the Enduro Scorekeeper before the affected meet begins. A team shall consist of not less than 3 nor more than 5 members from the roster. Riders may compete on only one team. They must be entered as a team before the meet begins. The three best placed riders will be used to determine the winning team for that event. In case of a tie, the 4<sup>th</sup> placed rider, and subsequently the 5<sup>th</sup> placed rider, will be used to determine the winning team. If still tied after the 5<sup>th</sup> rider, the event will be deemed a tie with both teams receiving equal points.

Motion Passed.

#### D. Championship Series Points System

FTR points are awarded to riders at all FTR-Sanctioned Enduros based on the place a rider finishes in their class according to the following scale:

Place	Points	Place	Points	Place	Points
1	80	11	30	21	20
2	75	12	29	22	19
3	70	13	28	23	18
4	65	14	27	24	17
5	60	15	26	25	16
6	55	16	25	26	15
7	50	17	24	27	14
8	45	18	23	28	13
9	40	19	22	29	12
10	35	20	21	30	11

31 & Below 10

1. Riders not finishing an event, (DNF), will receive their class finishing position points as follows. The winning rider will receive full position points. Riders completing within 1 timed checkpoint of the winning rider for their class will receive full position points. Riders completing 2 or more timed checkpoints behind the winning rider will receive fractional position points. Fractional position points will be calculated by dividing the number of timed checks completed by the rider, by the number of timed checks completed by the winning rider in their class and multiplying times the full position points (i.e. winner completes 5 checks, 4th place completes 2 checks –  $2/5 \times 65 = 26$  points) It is to the rider's advantage to complete as much of the course as possible.

2. In the event of a tie, (including High Point) tied Enduro scores will be broken by emergency checks scores for FTR points (i.e. a tie of both Enduro score and Emergency Check score). If still tied, refer to Chapter IV, Enduro Rules, D, 9.

3. FTR classes will be scored individually based on the 80 point scoring system.

4. The Season Overall Champion will be determined by scoring the top 20 Overall AA, A Displacement & A Specialty riders from each event. These riders will be scored in a separate Overall Championship Class for Season Overall Championship only. Points will be awarded by using the finishing points chart listed above. The event Overall winner will receive an additional 5 (five) point bonus. (85 points for High Point Overall)

5. A two-day event shall be scored overall as a one-day event (i.e. one physical event that lasts for two days) but the FTR points shall be counted twice in the FTR Championship Enduro Series (i.e. if there were 10 events in the championship schedule and one of them was a two-day event, year-end scores, averages, and 70 % counting runs would be figured on the total of 11 runs.)

6. Year-end team enduro, trophy totals will be determined by the best combined score of 90% of the enduros sanctioned by the FTR. This number will always be at least one event less than the total number of enduros sanctioned by the FTR. At co-sanctioned events, only FTR riders will be scored for championship points and counted for starting riders. If a rider doesn't actually high point the event, they will not receive the high point bonus points.

7. Worked Run Credit: The work points awarded will be counted the same as those awarded to a rider who enters the event. There will be no work run average or substitution at the end of the year. Work run points will be assigned and certified by the event Trail Boss. Workers must fill out an entry form (marked "WORK RUN CREDIT") to be eligible to receive work run points, and these forms (along with the Trail Boss's assignment of points) must be received by the scorekeeper within 30 days of the event. Individuals will earn 25 points per day worked, up to a maximum of 100 points. An individual can receive work points for only one club promoted event per competition year. For a non-club sponsored event, (i.e.: FTR Enduro Committee sponsored), the work points will be equal to the best race score performed in the year end results, unless a club work is not taken, then the standard 100 points if given. All other work rules still apply.

8. FTR points will be awarded at each Enduro of 60 miles or more in length or any closed-course Enduro that has a minimum of 30 miles per lap, exclusive of resets.

## Chapter VI

### Hare Scrambles Rules

#### A. General

1. A Hare Scrambles is a meet where rider ability is the determining factor. It is run over dirt roads, fire trails, woods and all types of terrain which may be negotiated by the power of the motorcycle and rider.
2. In Hare Scrambles, there shall be two additional officers.
  - a. The Rider Safety Coordinator, whose duty is to advise the HS Referee on matters of rider safety.
  - b. The Associate Hare Scrambles Referee, who is the primary assistant to the HS Referee. The Associate Referee's primary duties, will involve pit area safety and sound/tech inspection. The Associate Referee will coordinate with the Clubs regarding providing manpower for these functions, and supervise these functions at the event. The Associate Referee has the authority to penalize riders. Final authority on penalties remains with the Hare Scrambles Referee. If the Hares Scrambles Referee cannot be present at the event, then the Associate Referee will serve as the Acting Hare Scrambles Referee.
3. The FTR referee will contact the Club due to send an Assistant Referee (pre-rider) at least 2 weeks before the event.
4. Provide an Assistant Referee for the Hare Scrambles event preceding their sanctioned event. Assistant Referee must be an FTR recognized A, B or experienced rider.
5. Clubs shall reallocate trophies to give deeper presentation to the larger classes, more directly correlating class size and trophy depth, using data readily available on average class size.
6. A list of the hare scrambles classes and their requirements can be found at Chapter III.C.
7. Mini motorcycles manufactured with 17" front wheels may race in all Mini classes. All Mini motorcycles manufactured with 19" wheels are required to race in the Mini A class.
8. Peewee class motorcycles shall be 50 cc with an automatic clutch
9. No one will run a big bore kitted bike in a larger displacement class with the exception of Quads.
10. Any rider holding a pro-motocross license (including Pro-Am) is required to ride the AA class.
11. Rider age shall be confirmed for anyone moving to a specialty class where age is a requirement (Veteran, Senior, Super Senior, Junior, Mini, Masters, and Peeweeps, etc.).
  - They will show this proof at the sign-up table at the 1st race they enter.
  - We suggest that the person handling the number book do this.
  - The flyer will have this warning "Proof of age will be checked."
12. An A & B Enduro or Motocross (FTR rider) racing a Hare Scrambles will ride at least B division or above.
13. Each 65 B and C class competitor may have one designated adult rider follow him/her around the track in practice. The designated rider shall sign the entry form/waiver. The designated rider must render assistance to any stalled competitor. The designated rider shall avoid interference with any competitor. The designated rider shall wear an orange

vest or other distinguishing item as determined by the promoting club. Any substantial violation by the designated rider shall result in the disqualification of the competitor.

14. Fueling done during a race shall only be done in such designated areas with regulation approved fuel containers. No home made quick dump type containers are permitted. Any violation of this rule will result in immediate disqualification.

15. The ribboned-off area of the scoring chicane shall be considered a safety area. Any section of the track where an EMT or track worker is attending to a downed rider is also considered a safety area and it will extend to 20 feet either side of the downed rider. If there is a course worker signaling a rider to slow down with hand motions or a flag, the safety area will start at that point. Once a rider enters a safety area they are to maintain an even safe speed, without hard acceleration or braking or anything that would kick up avoidable dust or dirt. There should be no passing in the safety zone unless another rider is completely stopped and it is safe to pass. Failure to follow this rule will result in the rider being docked by one finishing position or more, up to disqualification from the event, subject to the referee's discretion.

#### B. Course

1. A hare scrambles is not an enduro. The course must not:
  - a. Cross any public highway.
  - b. Cross over as in a figure-eight.
  - c. Contain any possible bottleneck situations such as a one-plank bridge.
  - d. Contain any long sections where passing is impossible.
2. For the purpose of preventing course congestion and also to give rider visibility to the spectators, all FTR Hare Scrambles courses will be between 5 and 16 miles in length.
3. The "Scrambles Course" is defined as a closed-loop trail through a woodland area, appropriately marked with the FTR Day-Glow red arrows to outline the path and indicate the direction to be followed by the competitors. The arrows outlining the course shall be in a sequence and spaced close enough so a competitor can visually locate one arrow to the next arrow. If this arrow spacing is not practical, the trail must be defined by other means (natural barriers, etc.) such that a rider cannot misinterpret where the trail is. All major turns must be preceded by "down" arrows angled in the direction of the turn about 30 feet before the turn. The turn shall be adequately marked to instruct the competitors to ride inside or outside the arrows. (Use of natural barriers such as canals, large trees, etc. or marking with ribbon tape is suggested to prevent course-cutting.) A verification arrow shall be placed just after each turn. All sections of the trail which can cause unexpected hazards (like stumps or rocks) must be marked. Hazards are to be marked with red "X", ribbon tape, or sprayed with phosphorescent paint. To prevent riders from getting off the course "Wrong Way" markers (Blue "W") will be used at locations that could be confused for the actual course. Double Arrows, one over the other and a set on each side of the trail, will be used to indicate an area between these arrows that must be ridden. Double Arrows will be Day-Glow Green. Competitors must ride the trail from arrow to arrow without bypassing any arrows, and must ride within 20 feet to either side of any single arrow. If a MX track is included as part of the course, the MX track portions shall be considered "continuously double arrowed", and riders must stay on the actual MX track surface. Any section of the trail marked by a

pair of double over-and under GREEN arrows on both sides of the trail indicates the competitors must ride between the two sets of arrows and cannot ride outside either pair of arrows. Any time a rider leaves the trail as defined above, (either by "line picking", overshooting turns, **failing to pass between GREEN arrows**, emergency, etc.) that rider must return to the trail and re-enter at the point they left. **Failure to do so is a rule violation. Any such violation reported to the FTR Referee, Associate Referee, or Scorekeeper prior to the end of the protest period in writing on official DQ/penalty form available at FTR trailer, shall result in the rider being docked by one finishing position or more, up to Disqualification from the event, in accordance with Article XIV of the FTR Constitution. A violation of this section does not automatically constitute blatant "course cutting", as discussed in Chapter VIII, section B-1a.**

- Markers must be visible one to the next.
- Corner arrows with pre-turn arrows before the corner and a verification arrow after the corner.
- Danger markers as appropriate.

Any and all deviations to the above rules for any given event shall be clearly defined to all competitors during the pre-race riders meeting.

4. Specific dates and times must be announced in the flyer when riders may practice on the actual course.
5. It is the promoter's responsibility to insure, as best as possible, that the course cannot be cut.
6. Mile markers are mandatory at each mile.

### C. Event Rules

1. The start must be a dead-engine start with the rider positioned five to ten feet away from the motorcycle. At the starter's signal, the riders will run toward the motorcycles, start them and ride. From a dead engine start, Quad racers will be positioned on their Quads with both hands on the top of their helmet. At the starter's signal, they will start their engines and ride.

Sportsman-2 riders will start sitting on their bikes with engine off, approximately 30 seconds behind the rest of their row on the starter's signal.

2. Only the following divisions may be run together at the same time with one minute between starting different groups. The races will be run at the times listed unless permission to change is approved by the Hare Scrambles Committee prior to publication of the flyer. Starting times may be adjusted to accommodate available daylight hours. Race time deviations will be published on event flyer.

#### Saturday Race Schedule

Signup and Tech Inspection	7:30 AM – 10:30 AM
Peewee A&B Practice	9:00 AM – 9:05 AM
Peewee C Practice	9:05 AM – 9:10 AM
Quad Practice (Big Track)	9:30 AM – 10:00 AM
Peewee Quad Practice	9:10 AM – 9:15 AM
Super Peewee Quad Practice	9:15 AM – 9:20 AM
Bike Practice (Big Track)	10:00 AM – 10:30 AM
<b>Race 1</b>	<b>9:25 AM – 9:50 AM</b>
Peewee A	
<b>Race 2</b>	<b>9:55 AM – 10:15 AM</b>
Peewee B	
<b>Race 3</b>	<b>10:20 AM – 10:35 AM</b>

	Peewee C	
<b>Race 4</b>		<b>10:40 AM – 11:10 AM</b>
	Quad Super Peewee A	
<b>Race 5</b>		<b>11:15 AM – 11:40 AM</b>
	Quad Super Peewee B	
<b>Race 6</b>		<b>11:45 AM – 12:05 PM</b>
	Row 1 Quad Peewee A	
	Row 2 Quad Peewee B	

Riders Meeting at starting line 15 minutes before Mini-65 race  
**Race 6 12:15 PM – 1:45 PM**

Row 1 - Mini A
Row 2 - Mini B
Row 3 - 65A
Row 4 - Mini C, Mini Girls
Row 5 - 65B
Row 6 - 65C, 65 Girls

**Race 7 2:00 PM – 3:30 PM**

Row 1 - Evolution A
Row 2 - Junior A, Sportsman-2
Row 3 - Pre-Modern
Row 4 - Junior B
Row 5 - Evolution Senior A
Row 6 - Evolution B
Row 7 - Junior C, Junior Girls
Row 8 - Vintage, Evolution, Senior B
Row 9 - Sportsman-1
Row 10 - Beginner

Sunday Race Signup and  
Tech Inspection 3:30 PM – 5:30 PM  
**Race 8 3:45 PM – 5:15 PM**

Row 1 - Quad AA
Row 2 - Quad A
Row 3 - Quad B Open
Row 4 - Quad +30, Veteran Quad
Row 5 - Senior Quad
Row 6 - Super Senior Quad
Row 7 - Quad C Open
Row 8 - Women Quad, Quad 0-400
Row 9 - Women Vet Quad, Mast. Quad, Quad Util Open
Row 10 - Quad Junior

#### Sunday Race Schedule

Signup and Tech Inspection	7:30 AM – 9:30 AM
Practice	8:30 AM – 9:30 AM
Riders Meeting at starting line	10:00 AM
<b>Race 1</b>	<b>10:30 AM – 12:30 PM</b>
Row 1 - Vet A, Senior A	
Row 2 - Super Senior A	
Row 3 - Master A, Silver Master A	
Row 4 - Vet B	
Row 5 - Senior B	



- Row 6 - Super Senior B, Women A
- Row 7 - Golden Master A
- Row 8 - Master B
- Row 9 - Silver Master B, Women Vet
- Row 10 - Vet C
- Row 11 - Senior C
- Row 12 - Super Senior C
- Row 13 - Golden Master B, Class 66
- Row 14 - Master C, Women B

## Race 2

1:00 PM – 3:00 PM

- Row 1 - AA
- Row 2 - A Open
- Row 3 - A-250, A-200
- Row 4 - +30
- Row 5 - B Open
- Row 6 - B-250
- Row 7 - B-200
- Row 8 - C Open
- Row 9 - C-250
- Row 10 - C-200

3. Clubs can either split consolidated rows, or start consecutive rows together to relieve congestion at the start, with the approval of the HS Chairman or Referee, but cannot change the Starting Order. In the event that a course is under 8 miles in length or lap times are expected to be under 15 minutes by A riders, it is recommended that the clubs consolidate Super Senior A and Master A to one row and Vet B and Senior B be consolidated. The same applies to dusty conditions that require 2 minute interval between rows.

4. The start line will be a required check and a check point must be located at the finish.

5. FTR may determine the scoring methods used at any event. The race will be over at the finish line. It is up to the rider to complete within the allocated time for a complete race in his or her class. After each race, the sheets from the finish line and the checks on the course will be brought to the referee and/or assistant referee. The promoting club personnel will compile the final results and post in an appropriate place. There may be a check by checkers marking a score card on the course during the race.

6. Any disputes will be settled by a majority vote of any 3 of the 4 following people, whose decision is final:

- a. The promoter's Referee.
- b. The Assistant Referee is defined as the representative from the next sanctioned Hare Scrambles.
- c. The FTR representative assigned to the event (FTR Referee).
- d. Associate Referee

## Chapter VII

### Hare Scrambles Scoring

#### A. General

1. Cumulative scoring for the entire series will be handled by the Hare Scrambles Committee Chairman or appointed Hare Scrambles Scorekeeper.

2. A rider can register only one number per class per competition year. The rider will be scored only under that registered number during the competition year. To keep a rider number (bike #), members must renew their FTR membership before July 1.

3. A rider may ride one division or class per day, except #10 below. If they elect to move to another division, they must stay in the higher division and not return to the lower division without written request to and approval by the Hare Scrambles Committee. The division that the rider rides first (if the rider decides to change divisions on race day) will be the one that points will be kept on for that race. This is the lower-ranking of the divisions. After the race, they will be scored in the higher division. They will take up to 90% of the earned lower division points with them.

4. The promoter will receive from the Hare Scrambles Committee a list of previously registered numbers for number plates.

5. A rider classed as A or B including specialty classes cannot move down without petitioning the Hare Scrambles Committee, regardless of elapsed time since previous racing. (NOTE: C riders cannot return to Beginners Class.)

6. Clubs shall be required to post scores with times, for all riders competing, during the 30 minute protest period.

7. Race results are official at the conclusion of the final protest period on the race day.

8. Riders shall be awarded points if they complete 1 lap or more.

9. Saturday race, Youth and Peewee Quads, Vintage, Evolution, Beginners, Junior, Mini's or Peewee finishes cannot be counted towards hare scrambles team trophy competition.

10. Peewee quad riders may also enter a bike class for which they are eligible. Advancement will be kept separately.

#### B. Championship Series Points System

1. Class championship points will be awarded based on finishing position according to the following schedule:

1st place in class	50 points
2nd place in class	47 points
3rd place in class	45 points
4th place in class	43 points
5th place in class	41 points
6th place in class	40 points

etc., one point less per position provided the required number of laps are completed) Riders completing within 1 lap of the winning rider for their class will receive full position points.

Riders completing less than 2 laps from the winning rider in their class will receive fractional position points. For example: a rider completing 3 laps of a possible 5 lap race will receive only 3/5ths of their position points Exception, peewee riders will receive full point value regardless of laps completed.

2. In the event of tie scores, the points normally awarded to the respective positions will be averaged and each tied rider will receive the same number of points.

3. Each class will be allotted a maximum time to complete the course and be timed. In Peewee B and C, the course will closed to start additional laps 15 minutes after the start. In Peewee A, the course will closed to start additional laps 20 minutes after the start. All other Saturday races will be allotted 95 minutes to complete the course and be timed. The course will be closed to start additional laps at 90 minutes from the

time the first row leaves the start minus the time of the lead rider's first lap. All Sunday races will be allotted 2 hours and 5 minutes to complete the course and be timed. The course will be closed to start additional laps at 2 hours from the time the first row leaves the start minus the time of the lead rider's first lap.

4. In addition to class finishing positions, the exact starting time of each class, and exact finishing time to the nearest second of each rider, will be recorded at the finish line. At least one of the official referees for the event will be at the finish line to judge timing.

5. Timing will be used for two purposes:

a. To determine high-point and top 20 positions for the event and year-end overall top 10 awards (AA, A, B Divisions only). The top 20 riders (based on elapsed time) will be awarded points for yearend overall position on the same basis as each class is awarded points (paragraph B-1). B riders will not be eligible for top ten year-end overall awards. The B-High Point year end award will be calculated based on points given for the top 20 B riders (based on elapsed time) at each race on the same basis as each class is awarded points (paragraph B-1). The list of top 20 B riders for each race is to be used only for calculating the year-end B-High Point award, as is not to be published as a separate class for each race.

b. To assist the Hare Scrambles Chairman, Scorekeeper and Referee in determining promotions.

6. Year-end class and overall positions will be based on 70% of the sanctioned events. Rounding will be done to the nearest whole number with .50 being rounded up. FTR High Point and class winners will be determined at the end of the year and will receive awards at the annual FTR awards banquet. To qualify for year-end awards in the FTR Hare Scrambles Series, a rider must enter at least 50% of the sanctioned events that year. A worked run can count as an entry.

7. In case of year-end ties, riders who have the same number of points will share the highest position. The next lower rider will receive their actual position (i.e., if the first place is 165 points, second place is shared by both riders who tied with 150 points each and the next lower rider would be fourth place).

8. A high-point award will be given at each event but the overall top 20 positions will be determined later by the Hare Scrambles Scorekeeper.

9. Any FTR member who works (cannot ride the event) an FTR sanctioned Hare Scrambles will earn a work run credit equal to his highest score earned during the competition year. The work run credit will be used as one of scores (70% of the events) counted for year- end scores. Worked run credit will apply as such; if one day is worked, "worked credit" will apply to only one class of participation as designated on work run entry. A work run credit equal to the rider's highest score earned in the Top 20 during the competition year will be awarded toward the Top 20 competition. If two or more days are worked, worked run credit may be applied to both a Saturday and a Sunday class if participating in multiple classes. Work days will consist of either the days of the event, work days prior to the event, or any combination thereof. Assistant referees will receive the same credit as a worker. Work Run credits will be applied to Overall Top 20 positions in addition to the class listed on the entry. Worked run credits will be final at end of workday and are non-transferable from class listed on entry.

A rider who wishes to work an event to obtain points must:

a. Complete an entry form (same as for race) except write "Work Event" across the entry.

b. Submit entry form prior to practice (fee is not required)

c. Have entry form validated by trail boss.

10. Computing points for year-end scores is based on applying the above rules in the following manner:

- 70% of the sanctioned races are considered (e.g. 12 sanctioned races X 70% = 8.4, round to 8 races). The rider's best scores of the considered number (in this example 8) are computed.

- A rider changing divisions, either voluntarily or through promotion will take 90% of their earned points to the class they move to. EXCEPTION: If 90% of their points places them in a higher position in the new division, they will be awarded only enough points to attain an equal position in the new division. A hypothetical EXAMPLE for a 12-race series follows:

#### All Scores

Race #	1	2	3	4	5	6	7	8	9	10	11	12	Tot
Rider #1	45	39	50	DNF	W	45	37	37	47	50	45	50	445
Rider #2	47	45	35	W	50	47	47	35	39	40	47	47	479

#### Series Scores & Final Results

Race #	1	2	3	4	5	6	7	8	9	10	11	12	Tot
Rider #1	<u>45</u>	<u>39</u>	<u>50</u>	DNF	<u>50*</u>	<u>45</u>	<u>37</u>	<u>37</u>	<u>47</u>	<u>50</u>	<u>45</u>	<u>50</u>	382
Rider #2	<u>47</u>	<u>45</u>	<u>35</u>	<u>50*</u>	<u>50</u>	<u>47</u>	<u>47</u>	35	39	40	<u>47</u>	<u>47</u>	380

\* = Worked Score (Highest earned race points)

Best eight scores counted (Underlined)

The above final scores were figured in this manner: 12 total events X 70% = 8.4 = 8 best scores counted. Both riders worked a race for worked run credit (W) and will replace their lowest counted score with their highest earned score.

Rider # 1 has a total of 445 points

Rider # 2 has a total of 479 points

Rider # 1's "W" is replaced with the 50 score (riders highest score) making the final series score 382. Rider # 2's "W" is replaced with the 50 score (riders highest score) making the final series score 380.

#### 11. Team Scoring

a. (General): Year-end awards will be made separately for Hare Scrambles Bike and Quad Team competition. Only Sunday Classes are eligible for bike competition. All Quad classes, except Peewee classes, are eligible for Quad Team competition.

b. (Team Rosters): An official team roster consisting of at least 3, but not more than 8, riders must be registered with the Hare Scrambles Scorekeeper to qualify a team for competition. The roster must carry the signature of each registered team member. A team member may be deleted from a team only after that member has failed to compete in 3 consecutive Hare Scramble events in the current season. New members may be added at any time (up to the maximum of 8 riders per team), but roster changes and signatures must be submitted before the start of an event in order to count for that event. No rider shall be a member of more than one team per day. A rider may compete on both a Bike and Quad team.

Team members may change classes, within their respective eligible bike or quad group, without penalty to the team.

**c. (Race Entry):** A team shall designate, in writing, a minimum of any three, or a maximum of any five registered members to be scored for an event prior to the start of that event. The team shall pay an entry fee of \$1 per rider, per event, prior to submitting their entry. Designated riders for an event must be officially entered and compete in the event. Compete means they must start the race with their designated class, and shall not have received a refund of entry fee. Riders doing "work credit" in their registered team class at an event are not eligible for team competition for that event.

**d. (Scoring):** The best three scores for each team will be used to determine the winning team for each event. In case of a tie, the 4<sup>th</sup>, then 5<sup>th</sup>, place riders placing will be used to determine the team winner. The team standings for the overall winner of the team trophy will be determined by the formula for individuals: i.e. 1<sup>st</sup> place = 50 points; 2<sup>nd</sup> place = 47 points; 3<sup>rd</sup> place = 45 points; 4<sup>th</sup> place = 43 points; 5<sup>th</sup> place = 41 points; 6<sup>th</sup> place = 40 points (etc.-one point less per position). The Year-End winner will be determined by counting the team scores from all races completed in a season, less one. Season-end ties will be won by the team with the highest number of event wins, followed by number of 2<sup>nd</sup> places (etc), if necessary.

**e. (Protests and Penalties):** Any team wishing to protest team scoring results must file a protest in writing (or email) with the Hare Scrambles Referee within 5 days of the date that the Team Standings and Results are posted on the internet. After this time, results become final. Any score adjustments made as a result of a pretest shall only apply to the race at hand, and not be retroactive to previous races.

### **C. Rider Advancement**

1. This system will award Advancement Points based on the rider's performance in their class. Advancement Points will be awarded as follows:

1st place	10 Advancement Points
2nd place	5 Advancement Points
3rd place	4 Advancement Points
4th place	3 Advancement Points
5th place	2 Advancement Points

The only exception to the above would be a case where 5 or fewer riders compete in a class at an event, then the advancement points shall be awarded as follows:

1st place	5 Advancement Points
2nd place	3 Advancement Points
3rd place	2 Advancement Points
4th place	1 Advancement Points
5th place	0 Advancement Points

2. For all lowest division classes (Ex: Specialty and Displacement C Classes, etc), with the exception of the Golden Master, Women's, Evo and Youth Classes, when 25 advancement points are accrued, the rider is promoted to the next higher division. All youth B riders will advance when 30 advancement points are accrued. For all other classes, except youth-C riders, the advancement point is at 45 points. When advancement is earned or the points are accrued, at or prior to the first fifty percent (50%) of the proposed and approved season sanctions, the rider is promoted immediately and will then take 90% of the points awarded in the lower class to the higher class. When the points are accrued after 50% or more

of the scheduled events have been completed, the rider can remain in the lower class for the remainder of the season and the promotion will take effect at the start of the next competition season. However, riders voluntarily advancing themselves to a higher division after 50% of the scheduled events have been completed will carry no points to the higher division. Points earned in the lower division will remain in the lower division.

3. Advancement points will be carried only for the rider's previous ten events in which they earned championship points and would have been eligible, had they finished high enough, to earn advancement points. DNF's and DNS's which result in zero championship points earned, worked runs and disqualifications will not be counted as one of the ten events. The personal ten (10) events will carry from the previous years first race. This system will advance riders based on present performance, not an accumulation of past performances.

4. If a new FTR member completely dominates a class, the Hare Scrambles Committee, through majority vote, may elect to advance the rider to the next higher class regardless of advancement points accrued. In addition, any rider can be advanced at any time by a unanimous vote of the Hare Scrambles Chairman, Referee and Scorekeeper if it can be shown by use of lap and overall times that the rider is capable of finishing in the top 1/2 of the next higher division and the rider has finished at least 3 events in the lower division.

5. The Hare Scrambles Committee reserves the right to adjust or refine the Advancement Points System, by majority vote, as the need arises.

6. Any rider who Overall High Points a race prior to the first fifty percent (50%) of the proposed and approved season sanctions, will be promoted to the AA class immediately and will then take 90% of any points awarded in the A class to the AA class. If the rider Overall High Points a race after 50% or more of the scheduled events have been completed, the rider can remain in the lower class for the remainder of the season. The promotion will take effect at the start of the next competition season. However, riders voluntarily advancing themselves to the AA class after 50% of the scheduled events have been completed will carry no points to the AA class. Points earned in the lower division will remain in the lower division.

7. Beginner class riders will advance to the next higher division after accumulation of one 1st place, 3 top 5 finishes, or 8 starts. This promotion will take effect immediately. The beginner rider will carry 50% of their accumulated points into the C division and no points to any other division. The Beginner classes will receive no year-end awards.

8. All youth C riders (Ex: Junior-C, Mini-C, 65-C and Peewee-C) will advance to the next higher class after accumulation of two 1st place finishes or as follows:

a. Junior C – 5 top five finishes.

b. Mini C – 4 top five finishes.

c. 65 C – 4 top five finishes.

d. Peewee C - 4 top five finishes.

When there are 8 or less riders in one of the above listed C classes, no advancement points will be assessed.

9. Advancement for Saturday riders and Sunday riders will be kept separately with the following exceptions: Saturday adult riders may ride no more than one division lower on Sunday. Sunday riders may ride no more than one division lower on Saturday. Youth "A" riders, except peewee, moving to an older

age bracket may only move down one division level, including going to Sunday.

## Chapter VIII

### Hare Scrambles Responsibilities

#### A. Promoters

1. It is mandatory that all promoting clubs provide spectator and participant liability insurance coverage of a minimum of \$1,000,000 for FTR sanctioned hare scrambles. The Hare Scrambles Referee must be provided proof of insurance two weeks prior to the event. Event will be non-FTR if proof of insurance is not provided. The Florida Trail Riders, Inc., its officers and officials be named in the insurance policy as an insured party.
2. Must have ambulance on the premises.
3. Practice will be available the day of the event. If this is not possible due to insurance or land owner problems, the Hare Scrambles Committee will be notified and the riders will be advised in the flyer.
4. The promoter must make an honest effort that only the minimum number of people required to clear and make the course safe are aware of the course until the day of open practice.
5. Practice on the course will be limited to sign-up entrants with the following exceptions: Course marshals, checkers, ambulance, first aid, communication people, or event workers who can do their jobs better by being familiar with the course. The Hare Scrambles Competition Committee reserves the right to adopt or change the practice format, by unanimous vote, at any time.
6. The promoter will supply official times for each rider and all trophy positions to the Hare Scrambles Scorekeeper at the completion of the event.
7. Have two accurate timing devices (one used as back-up) and record time of each rider as defined in the rules.
8. Rider numbers are to be recorded by the promoter and to be registered with FTR by notification of the Hare Scrambles Committee Chairman.
9. Riders who, after practice and before the days races start, determine the race is unsafe for them, can have their entry fee refunded.

#### B. Riders

1. Specific disciplinary action by the Hare Scrambles Committee:  
Majority vote only.
  - a. Course cutting
    - 1st offense - Rider gets zero points. They don't have to count towards their year-end score.
    - 2nd offense - Rider gets zero points. They do have to count towards their year-end score.
    - 3rd offense - Rider receives a three (3) race suspension.
  - b. Riding the course during other class races unless officially working for the promoting club or FTR - suspension for that event.
  - c. Aiding other entrants not in their specific races at any area other than the designated pit area - suspension for that event-both rider and helper.

2. Anyone who accuses a rider of the above must file a written protest with the Hare Scrambles Committee Chairman. The Hare Scrambles Committee will act on the protest within 60 days and will notify the accused rider so that he may appear before the committee. The meeting date will be the effective date for any suspension.

3. Firmly affixed number plates with the correct color background, correct color and type FTR assigned numbers, and correct color and type alphabetical designations will be required on each side of the motorcycle and on the front. Quads will have number plates with the correct color background, correct color and type FTR assigned number, and correct color and type alphabetical designation firmly affixed to the front and the rear of the quad. Numbers and letters will be standard, block style of one color. No flames, checkers, chrome or stylized numbers and letters of any type are allowed. For the front plate letters will be the size of the numbers or less, provided the numbers are at least 5 inches high and the letters at least 2 inches high. For the side plates, letters will be the size of the numbers or less, provided the numbers are at least 3.25 inches high and the letters at least 2 inches high. Keep in mind that the scorekeepers must be able to quickly identify the color, number and letter on your machine as you ride through the scoring area.

Classes	Number plate Color (3)	Letters / letter and number color
*AA	red	AA / white
Open A, B & C	yellow	A, B, C / black
250 A, B & C	green**	A, B, C / white
200 A, B & C	black	A, B, C / white
+30	white	none / black
Veteran A, B & C	red	A, B, C / white
Senior A, B & C	green**	A, B, C / white
Super Senior A, B & C	white	A, B, C / black
Master A, B & C	blue***	A, B, C / white
Silver Master A, B	silver	A, B / black
Golden Master A, B	black	A, B / white
Class 66	Black	X/white
Women A, B & Vet	yellow	A, B, V / black
Junior A , B, C, Girls	black	A, B, C, G / white
Mini A, B & C, Girls	white	A, B, C, G / black
65 A, B, C, Girls	green**	A, B, C, G / white
Vintage	white	V / black
Pre-Modern	red	none / black
Evolution A, B	yellow	A, B / black
Evolution Senior A,B	green	A,B / white
Peewee A, B & C	white	A, B, C / black
Beginners	white	none / black
Sportsman-1^	Blue	none / black or white
Sportsman-2	Blue	X / black or white

Classes	Number plate Color (2)	Letters / letter and number color
Quad AA	red	AA / white
Quad A	white	A / black
Quad Open B, C	white	B, C / black
Quad 0-400	yellow	none / black

Quad +30	red	none / white
Veteran Quad	red	V / white
Senior Quad	black	none / white
Super Senior Quad	black	X / white
Master Quad	green**	none / white
Quad Utility	white	X / black
Women Quad	blue***	none / white
Women Vet Quad	blue***	V / white
Quad Junior	white	none / black
Quad Super Peewee A	green	A/ white
Quad Super Peewee B	green	B / white
Quad Peewee A	white	A/ black
Quad Peewee B	white	B/ black

\*See VI.A.9 Pro Am rule.

\*\* This should be a Kelly green. Do not use greens so light that they look yellow or so dark that they look black.

\*\*\*This should be a medium blue. Do not use blues so light that white numbers and letters are hard to see on them or blues so dark that they look black.

^Temporary backgrounds and hand drawn numbers are allowed. Numbers should be at least 5 inches tall where possible.

a. All A, B and C Division riders will use a letter to designate their divisions. Vintage bikes (not Evolution) will have the letter "V" on their number plates.

b. Front numbers shall be a minimum of five (5) inches high, side plate numbers will be a minimum of 3.25 inches high, and all letters a minimum of two (2) inches high.

### C. Hare Scrambles Quad Technical Requirements

1. An operating tether cord/switch, attached to the rider will be required for all competition Quads.
2. Quads must not exceed 50 inches in width.
3. Quads must display number plates, with the rider's number on the front and rear of the Quad.
4. From a dead engine start, Quad racers will be positioned on their Quads with both hands on top of their helmet. At the starter's signal, they will start their Quads and ride.
5. Peewee Quads will start with bikes running, hands on head. Row 2 will start as soon as practical after row 1. All timing will be based on Row 1. Only bikes and riders will be allowed on the grid in front of row 2 at the start.

### D. Committee

1. The FTR Hare Scrambles Committee will be separate from the Enduro and Motocross Committee. The Hare Scrambles Committee is empowered to run the scrambles series, vote on Rule changes and make suggestions to the FTR Executive Committee and Board of Directors.
2. The Hare Scrambles Committee will be composed of one chairman, one representative from each promoting organization granted a sanction for the year in question, one rider representative from AA/A displacement classes, B/C displacement classes, Specialty A and B classes, Specialty C classes and Women's classes, Saturday classes, Quad classes, HS Scorekeeper and HS Referee.
3. All FTR clubs and previous promoters who have received FTR sanctions in the past will be eligible to request an FTR Hare Scrambles sanction. New promoters will be considered

by the Hare Scrambles Committee and forwarded to the FTR officers for final approval before sanctions are granted.

4. All promoters desiring an FTR sanction for Hare Scrambles will submit a request to the event so desired at the Hare Scrambles committee meeting immediately preceding the FTR sanction meeting. Any further requests for sanctions will be evaluated by the Hare Scrambles Committee Chairman and the Executive Committee of FTR.

5. The FTR Hare Scrambles Committee will not grant any sanctions to a promoter who has acted irresponsibly. Any promoter who has more than one event sanctioned and acts irresponsibly will have all future sanctions reviewed by the Hare Scrambles Committee before the next event scheduled by that promoter. Any promoter who has a sanction revoked is, at that time, no longer a member of the Hare Scrambles Committee.

6. All rules for the next Hare Scrambles season will be brought to the floor, printed in the magazine, reviewed by the members and voted on and passed at any time as long as the requirements of Article XIV, Section F can be met" (publication and approval by the Board of Directors).

## Chapter IX

### Motocross Rules

#### A. General

1. A Motocross is a meet where rider ability and age is the determining factor. Motocross is generally run over a closed loop course that consists of a variation of turns, hills, jumps and terrain to create a challenge for rider and machine. Riders start equally with in their respective class behind a starting grid of sorts and navigate the course for the specific time or number of laps. The First rider to the checker flag is the winner.
2. The FTR Motocross Championship Series will consist of a minimum of eight (8) to a maximum of 14 events during the annual race season.
3. Requests for FTR Motocross Championship Series sanctions must be made for each event on the FTR Sanction Application Form. A \$75.00 sanction fee is required to be submitted with each event application.
4. FTR Motocross Sanctions are not transferable. Motocross Committee should be notified of cancellations and event rescheduling.
5. Sanctions may be acquired during the Annual Sanction meeting. Each Promoter/Track Owner will be allowed one series event. Promoters/Track Owners requesting multiple events will be placed on a stand-by list for available dates or cancellations. Sanctions will be limited to two per track per series.
6. All FTR MX Sanctions must be approved by the FTR Executive Board. Promoters/Track Owners must follow all FTR rules and guidelines. The FTR reserves all rights to cancel sanctions at any time.
7. All riders are required to be FTR members which will include full FTR membership and one-day FTR membership which can only be used twice in a season.
8. There will be no FTR Hare Scrambles and FTR Motocross events scheduled on the same dates. FTR Enduros and FTR Motocross may run on the same dates.
9. FTR points will be awarded for entering FTR MX events toward series overall awards. Refer to Chapter III F.2.E.
10. Riders may enter more than 1 class per day based on eligibility.
11. Rider age shall be confirmed for classes which age is a requirement. This should be done at sign-up and number registration of the riders first event.
12. The FTR Referee shall be present at all FTR Motocross events.
13. The most current American Motorcycle Association Rules for motocross will resolve issues over any area not specifically addressed by the Florida Trail Riders Rule book.
14. All riders will adhere to the specific rules and requirements set forth by each promoter/track owner pertaining to property, safety and liability.
15. All Florida Trail Riders members are representatives for the sport of off-road motorcycle riding. The sport breeds competition and Sportsmanship. Members are subject to expulsion from the FTR for conduct unbecoming a member.
16. Current FTR Enduro, Hare Scrambles and Quad Scrambles riders may step back one class, i.e. AA to A, A to B, B to C.
17. All riders must compete in the highest ability classification obtained in any Motocross sanctioning organization.

#### B. Course and Facility:

Any rider who determines after practice that the track is too dangerous or not suited to their ability, may be refunded their competition entry fee prior to the first race.

#### C. Event Rules:

1. A starting method will be utilized to assure equal and fair starts to all riders. Single bike backward failing gates are recommended but, not required. Rubber band starts are acceptable if necessary
2. No big bore kits will be allowed in displacement based classes.
3. Competition motorcycles are required to be inspected prior to practice for items that are unsafe. The following is a list of items frequently found that could cause harm to riders, but is not meant to be all inclusive. Motorcycles not meeting tech inspection requirements are required to correct any deficiencies prior to being allowed to compete:
  - a. broken levers
  - b. no front and/or rear brakes
  - c. broken spokes
  - d. flat tires
  - e. no emergency kill switch
  - f. race number on all three number plates
  - g. Quads are to have an operating tether kill switch and nerf bars with nets to compete.
4. Riders are required to wear the proper protective equipment. Helmets, goggles and protective footwear are required as minimums to compete.
5. Riders are required to abide by all race flags. No passing on yellow flags. A yellow flag warns of a rider down or a caution condition. Intentional passing past a yellow flag could result in rider disqualification.
6. Riders are allowed on the race course only after they have entered the event, passed tech inspection and only during their respective class moto or practice.
7. Riders holding Professional motocross licenses (including ProAm) or pro level ranked off-road riders are required to compete in the "AA" class.
8. Riders must compete on the same motorcycle during all motos in one class. Riders who receive outside help in completing a moto are subject to a one lap penalty or disqualification.
9. Peewee riders at certain tracks, may compete on specially prepared Peewee tracks that are separate from the main track. Peewee riders are not allowed to ride on the track unless accompanied by parent or guardian. During the Peewee races, no parent will be allowed to be on the track.
10. Mechanics of riders and Peewee parents must remain at least 5 feet behind racer during the start.

## Chapter X

### Motocross Scoring A. General:

1. Cumulative Scoring for the entire MX series overall standings will be handled by the Motocross Committee Scorekeeper.
2. The two moto per class format will be used. Accumulation of points for both motos will determine overall event finish position. For example, 1st place=1 point, 2nd place=2 points and so on. Best result of second moto breaks all ties.  
Example: 1st Moto Finish + 2nd Moto Finish = Overall Finish

Rider #1: 2<sup>nd</sup> = 2 points + 3<sup>rd</sup> = 3 points = 5 points = 3<sup>rd</sup> place

Rider #2: 3<sup>rd</sup> = 3 points + 2<sup>nd</sup> = 2 points = 5 points = 2<sup>nd</sup> place

Rider #3: 1<sup>st</sup> = 1 point + 1<sup>st</sup> = 1 point = 2 points = 1<sup>st</sup> place

**3. Qualifiers** – If there are more riders than can be accommodated on a starting line the following program will be implemented: Riders are broken into two groups by random order via the hosting tracks computer. The two resulting Qualifiers and Last Chance Qualifier (LCQ) will be run during the first round of motos (example: 40 man gate and more than 40 bikes sign up, two qualifiers from which 16 riders from each qualifier plus 8 riders from LCQ go to the second moto for overall score. Note the rider that placed 9<sup>th</sup> in the LCQ will be awarded 41<sup>st</sup> points for overall and so forth. If more than 20 quads sign up for a 40 man gate, two qualifiers will be run from which 8 riders from each qualifier plus 4 riders from LCQ go to second moto for overall score. Note the rider that finishes 5<sup>th</sup> in the LCQ will be awarded 21<sup>st</sup> points for overall and so forth. The number of laps for the qualifiers will be the same as the laps scheduled for race day, except for LCQ, it will have 2 laps.).

**4.** A current list of registered riding numbers will be maintained. The list of riding numbers will be at each event to verify number availability and new number assignments. This should be utilized at sign-up. New members who register at the event can register their number if available for the balance of the competition season. Riders will not be allowed to use a number already registered to another rider.

**5.** Riders that compete in “A” or “B” classes cannot move to a lower class without petitioning the FTR Motocross Committee in writing for review and approval.

**6.** After all class results are posted, there will be a 30 minute protest period. After the protest period, all event results will be official. Protests must be in writing and given to the FTR Motocross Referee.

**7.** Riders must compete in 50% of the Motocross Championship Series events to be eligible for year-end awards.

**8.** Classes may be combined into the same race, but must be staggered started and scored separately.

**9.** “A” class winners of each Championship Series will be awarded the #1 plate in their respective class for the following year if desired.

### **B. Championship Points System:**

**1.** Year-end overall class standings will be based on 80% of the series events. For example; if the FTR Motocross Championship Series is 10 events, then the riders best 8 races are counted.

**2.** Points are based on overall event class finish and are as follows:

1st place in class	50 points
2nd place in class	47 points
3rd place in class	45 points
4th place in class	43 points
5th place in class	41 points
6th place in class	40 points

(etc. and one point less for each consecutive placing, provided all required laps are completed.)

**3.** The FTR Motocross Championship Series may include double point rounds. Double Point Round(s) will be identified on the series schedule prior to Round 1. In addition, each rider will be awarded five (5) points for each race in which the rider

is signed up and paid their entry fees. The rider must be present at sign up on the day of the event.

**4.** A rider who has signed up for the event but is unable to start (DNS) or finish (DNF) a moto will be awarded last place points for that moto. For Example: Johnny has signed up for a class with a total of 10 riders. If Johnny has a DNS or DNF in either or both motos, he will be awarded 10th place points for each DNF/DNS. In the event multiple riders in a moto receive a DNF/DNS they shall be scored with DNF ahead of DNS. For Example: A 10 rider moto has one DNF and one DNS the DNF rider will receive 9th place points while the DNS rider will receive 10th place points. Multiple riders with DNF/DNS finishes in a moto will each receive the same points as last. For Example: A 10 rider moto has 2 riders who receive a DNF. Both riders will receive 10th place points.

**5.** DNS (did not start) - a rider that does not complete 1 lap of a moto. DNF (did not finish) - a rider that does not take the checkered flag and complete half of the scheduled laps of a moto.

**6.** There are no work run credits given in FTR Motocross Events.

### **C. Advancement Point System:**

**1.** If an FTR member completely dominates a class, the Motocross Committee may, through majority vote, elect to advance a rider to the next higher class.

**2.** Riders who are advanced by the Motocross Committee during the competition year and riders, who promote themselves, will take 90% of their accumulated points to the higher class. A rider cannot improve their class standing through advancement.

## **Chapter XI**

### **Promoters/Track Owner Responsibilities**

**1.** Liability insurance is mandatory and must be provided by the track. FTR requires a minimum of \$1,000,000 and requires FTR, its officers and officials to be named as insureds. The Motocross Referee must be provided proof of insurance prior to the event.

Event will be non-FTR if proof of insurance is not provided.

**2.** A \$5.00 per rider head tax will be collected from the promoter/ track owner after the completion of the days events by the FTR scorekeeper or referee.

**3.** Promoter/Track owner must review FTR Motocross number registration list, provided by FTR MX Scorekeeper, at sign-up of each event to verify numbers, verify riders age and log new member number registrations. Registrants should receive a visible indicator at sign-up that they have registered to compete before they will be allowed to practice.

**4.** Emergency medical service and Ambulance is required on site at all times during event.

**5.** The MX course must be free of unsafe obstacles. It is the responsibility of the Promoter/Track owner to prepare and groom track prior to event.

**6.** FTR MX Referee will review track layout and conditions. Any items that appear hazardous to riders and /or machines will be corrected prior to start of the events.

**7.** A Tech Inspector will provide a general inspection for obvious safety issues before and/or during staging of the first round of practice. Any rider with a violation on his motorcycle will be given the option to run the one lap late practice, providing the repair is made prior to the conclusion of practice.

The rider may be prevented from completing practice if the tech inspector feels the violation puts the rider or others at risk of injury.

**8.** Promoter/Track owner is responsible to provide scoring personnel to accurately record lap race results. Event tracks must keep finishing records for FTR Championship events and submit them to the FTR MX scorekeeper immediately following the event. **9.** Race flags will be required to maintain communication and control of the riders on the race track. Flags consist of:

- a. The Checkered Flag means the race is over.
- b. The White Flag means there is one lap remaining.
- c. The Red Flag means the race has been stopped, exit the course immediately.
- d. The Green Flag means all is OK. Proceed with race.
- e. The Blue Flag means you are being lapped by the leaders. Move over and let them pass.
- f. The Black Flag means you are being removed from the race. Exit the course immediately.
- g. The Yellow Flag warns you of danger and fallen riders. Do not pass and proceed with caution.
- h. The Medic Flag is White with Red Cross and warns you of danger. A rider is down on or near the track and is receiving medical attention. Proceed with extreme caution, Do Not Pass, Do Not Jump.
- 10.** Yellow warning flag personnel will be posted during events at all blind obstacles and at regular intervals along race track.
- 11.** Promoter/Track owner may split or consolidate classes to relieve starting line congestion when required.

## Chapter XII

### Motocross Championship Series Classes

All numbers must be a minimum of 6 inches tall. \*NOTE 1: Vet C riders will be C level riders only. Riders will be watched closely and accumulation of 30 promotion points will promote the rider.

#### Recommended Event Format:

- Sign-up 7:00 - 8:00
- Sunday Practice 8:00 - 9:30
- Riders meeting 9:30 - 9:45
- Race Start 10:00
- Race Finish 4:00 - 6:00

Recommended Event Practice: Practices may be split to prevent congestion on race course.

- All Mini's & Girls 15 min
- All 125's 15 min
- All 250/Open/AA 15 min
- All Quad's 15 min
- Evolution/Vintage/Woods 15 min
- Late practice 15 min
- All Peewee 15 min

(Peewee practice can be run on a separate course)

#### Recommended Event Racing Time:

- All classes 15 min
- Peewee 10 min

#### Recommended Event Trophy Format:

- All "A" classes 3 trophies or 30% of entries
- All "B" classes 4 trophies or 30% of entries
- All "C" classes 5 trophies or 30% of entries
- All Age classes 3 trophies or 30% of entries
- All Specialty classes 3 trophies or 30% of entries
- \*Exception: Trophy awards for classes with less than 10 riders will be 1 per 3 riders.

#### Recommended Starting Procedure:\*

1. Riders should be given notice to start their engines.
  2. Starter should acknowledge each rider for readiness.
  3. Starter should hold up 30 second card.
  4. Starter should indicate 5 seconds.
  5. The starter should then turn card sideways.
  6. 3-5 seconds after card goes sideways, the gate should drop.
- If a rider has mechanical problems on the starting line, he must indicate so to the starter at which point the rider will have a maximum of two minutes to resolve problem. At two minutes, the race will begin. The rider and motorcycle must be at the starting line to receive the two minute period. Only 1- two minute hold per moto.



# Motocross Classes and Requirements

FTR Proposed Class	Class Description	Bike Restriction	Special Restrictions
Peewee 4-6	51cc (4-6) Special Limited	0-51cc 2-Stroke/4-Stroke	Stock 10" front and rear as produced
Peewee Shaft 4-6 Shaft	51cc (4-6) Shaft Drive Limited	0-51cc 2-Stroke	Stock 10" front and rear as produced
50cc 7-8 Stock	51cc (7-8) Limited	0-51cc 2-Stroke 12" Front / 10" Rear Max. As produced	Stock 12" Front / 10" Rear Max. As produced
50cc 4-8 Open	51 cc (4-8) Open	0-51cc 2-Stroke 12" Front / 10" Rear Max. As produced	Stock 12" Front / 10" Rear Max. As produced
65cc Beginner	65cc (7-11)	0-65 cc 2 Stroke / 0-110cc 4 Stroke	14" front wheel max. Two stroke play bikes (ex. PW80) up to 80cc displacement are allowed to enter 65cc
65cc 7-9	65cc (7-9) Limited	59-65 cc 2-Stroke	14" front wheel max. Two stroke play bikes (ex. PW80) up to 80cc displacement are allowed to enter 65cc
65cc 10-11	65cc (10-11) Limited	59-65 cc 2-Stroke	14" front wheel max. Two stroke play bikes (ex. PW80) up to 80cc displacement are allowed to enter 65cc
65cc 7-11 Open	65cc (7-11)	59-65 cc 2-Stroke	14" front wheel max. Two stroke play bikes (ex. PW80) up to 80cc displacement are allowed to enter 65cc
85cc Beginner	85cc (9-14)	79-85cc 2-Stroke / 125-150cc air cooled 4 Stroke	14" front wheel max. Two stroke play bikes (ex. PW80) up to 80cc displacement are allowed to enter 65cc
85cc 7-11	85cc (9-11) Limited	79-85 cc 2-Stroke	17" front wheel max. Trail Bikes like XRf, TTR, Up to 150 cc Four-stroke are allowed to enter 85cc classes
85cc 12-15	85cc (9-11) Limited	79-85 cc 2-Stroke	17" front wheel max. Trail Bikes like XRf TTR, Up to 150 cc Four-stroke are allowed to enter 85cc classes
Junior Mini	85cc 7-11	79-85 cc 2-Stroke	
Super Mini	Super Mini 1 (9-15)	79-112cc 2-Stroke/75-150cc 4-Stroke	Max. Wheels: Front 19"; Rear 16"
Youth 13-15	13-15 B/C	100 cc-125cc 2-Stroke/ 170cc - 250cc 4-Stroke	
Youth 16-24	16-24 B/C	100- Openc 2-Stroke/ 170-Openc 4-Stroke	
Two Stroke Only	Two-Stroke A/B/C	122-250 cc 2-Stroke	
Four Stroke Open	Four Stroke A/B/C	250-450 cc 4-Stroke	
Girls 9-11	Girls (9-11)	79-85cc 2-Stroke	Max. Wheels: Front 17"; Rear 14"
Girls 12-16	Girls (12-16)	79-112cc 2-Stroke/75-150cc 4-Stroke	Max. Wheels: Front 19"; Rear 16"
Woman 14+	Women (14+)	99-250cc	Min. Wheels: Front 19"; Rear 16"
Woman Vet	Women (30+)	125-450cc	Min. Wheels: Front 19"; Rear 16"
25 +	Junior 25+	122- Open cc (2 or 4-Stroke )	
Vet Advanced	35+	122-Open cc (2 or 4-Stroke)	
Vet Amature	35+	122- Open cc (2 or 4-Stroke )	
40 +	Senior 40+	122- Open cc (2 or 4-Stroke )	
50 +	Masters 50+	122- Open cc (2 or 4-Stroke )	
250 A	250 A	122-250 cc (2 or 4-Stroke )	
250 B	250 B	122-250 cc (2 or 4-Stroke )	
250 C	250 C	122-250 cc (2 or 4-Stroke )	
250 D	250 D	122-250 cc (2 or 4-Stroke )	
450 A	450 A	122- Open cc (2 or 4-Stroke )	
450 B	450 B	122- Open cc (2 or 4-Stroke )	
450 C	450 C	122- Open cc (2 or 4-Stroke )	
Woods	None	Woods 0-Open cc Enduro Machine 13/Above	
Vintage	None	Vintage 0-Open cc 1974 or earlier 13/Above	
Evolution	None	Evolution 0-Open cc drum brakes 13/Above/Air Cooled	
90 Bombers	1999 and older open	Any motocross/Woods bike pre-1999 with period correct only performance parts	
Quad Youth 4-8	None	0-50 cc Production Frame / Production Case 4-8	
Quad 7-12	None	51-90 cc 2 Stroke 50-125cc 4 Stroke Production Frame/ Production Case 7-12	
Quad 13-15	None	Quad 13-15 91-200cc 2 Stroke, 91-300cc 4 Stroke 13-15*	
Quad Advanced Open	None	Quad A/B 0-Open cc 4 wheels 16*/Above	
Quad Amateur Open	None	Quad B 0-Open cc 4 wheels 16*/Above	
Quad 35+	None	+35 Quad Men 0-Open cc 4 wheels 35*/Above	
Quad Woman	None	Quad Women 0-Open cc 4 wheels 16*/Above	

# Hare Scrambles Number Plate requirements

Classes	Number plate Color (3)	Letters / letter / number Color	Classes	Number plate Color (2)	Letters / letter / number Color
*AA	Red	AA / white	Quad AA	Red	AA / white
Open A, B, & C	Yellow	A, B, C / black	Quad A	White	A / black
250 A, B, & C	Green**	A, B, C / white	Quad Open B, C	White	B, C / black
200 A, B, & C	Black	A, B, C / white	Quad 0-400	Yellow	none / black
+30	White	none / black	Quad +30	Red	none / white
Veteran A, B, & C	Red	A, B, C / white	Veteran Quad	Red	none / white
Senior A, B, & C	Green**	A, B, C / white	Senior Quad	Black	none / white
Super Senior A, B, & C	White	A, B, C / black	Super Senior Quad	Black	X / white
Master A, B, & C	Blue***	A, B, C / white	Master Quad	Green**	none / white
Silver Master A & B	Silver	A, B / black	Quad Utility	White	X / black
Golden Master A & B	Black	A, B / white	Women Quad	Blue***	none / white
Class 66	Black	X / white	Women Vet Quad	Blue***	V / white
Women A, B, Vet	Yellow	A, B, V / black	Quad Junior	White	none / black
Junior A, B, C, Girls	Black	A, B, C, G / white	Quad Super PW A, B	Green	A, B / white
Mini A, B, C, Girls	White	A, B, C, G / black	Quad PW A, B	White	A, B / black
65 A, B, C, Girls	Green**	A, B, C, G / white			
Vintage	White	V / black			
Evolution A, B	Yellow	A, B / black			
Evolution Senior A, B	Green	A, B / white			
Pre-Modern	Red	none / white			
Sportsman-1	Blue	none / black or white			
Sportsman-2	Blue	none / black or white			
Peewee A, B, & C	White	A, B, C / black			
Beginners	White	none / black			

\*\* This should be a Kelly green. Do not use greens so light that they look yellow or so dark that they look black.

\*\*\*This should be a medium blue. Do not use blues so light that white numbers and letters are hard to see on them or blues so dark that they look black.

# Number Plate Examples

<p><b>12<sup>AA</sup></b> RED BACKGROUND WHITE NUMBERS &amp; LETTERS</p>	<p><b>T H E S E  A R E  C O R R E C T</b></p>	<p><b>12<sup>aa</sup></b> WRONG</p>	<p><b>12AA</b> WRONG</p>	<p><b>12A<sup>A</sup></b> WRONG</p>	<p><b>12<sup>AA</sup></b> WRONG</p>
<p><b>34<sup>A</sup></b> YELLOW BACKGROUND BLACK NUMBERS &amp; LETTERS</p>		<p><b>3<sub>4</sub><sup>A</sup></b> WRONG</p>	<p><b>3A4</b> WRONG</p>	<p><b>3<sup>4</sup>A</b> WRONG</p>	<p><b>34<sup>A</sup></b> WRONG</p>
<p><b>56<sup>B</sup></b> GREEN BACKGROUND WHITE NUMBERS &amp; LETTERS</p>		<p><b>56<sup>b</sup></b> WRONG</p>	<p><b>56<sup>B</sup></b> WRONG</p>	<p><b>56<sup>B</sup></b> WRONG</p>	<p><b>56<sup>B</sup></b> WRONG</p>
<p><b>78<sup>c</sup></b> BLACK BACKGROUND WHITE NUMBERS &amp; LETTERS</p>		<p><b>78<sup>c</sup></b> WRONG</p>	<p><b>78<sup>c</sup></b> WRONG</p>	<p><b>78<sup>c</sup></b> WRONG</p>	<p><b>78<sup>c</sup></b> WRONG</p>
<p><b>48<sup>v</sup></b> WHITE BACKGROUND BLACK NUMBERS &amp; LETTERS</p>		<p><b>V48</b> WRONG</p>	<p><b>48<sup>v</sup></b> WRONG</p>	<p><b>48</b> WRONG</p>	<p><b>48<sup>v</sup></b> WRONG</p>
<p><b>90<sup>x</sup></b> BLUE BACKGROUND WHITE NUMBERS &amp; LETTERS</p>		<p><b>90<sup>x</sup></b> WRONG</p>	<p><b>90<sup>x</sup></b> WRONG</p>	<p><b>90<sup>x</sup></b> WRONG</p>	<p><b>90<sup>x</sup></b> WRONG</p>
		<p><b>T H E S E  A R E  I N C O R R E C T</b></p>			

**Exhibit 1**

Single arrow indicating trail is to be ridden straight ahead.



**Exhibit 2**

Down arrows indicating caution, a turn or hazard area is ahead.



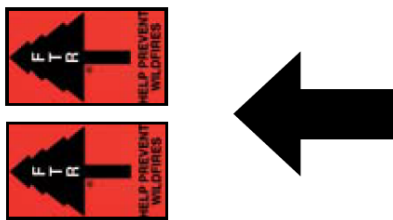
**Exhibit 3**

Danger marker indicating a hazardous area. Use caution.



**Exhibit 4**

Arrows indicating a major turn to the left.



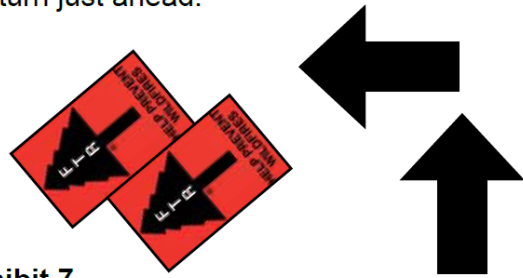
**Exhibit 5**

Marker indicating the rider has missed a turn and is no longer on the course.



**Exhibit 6**

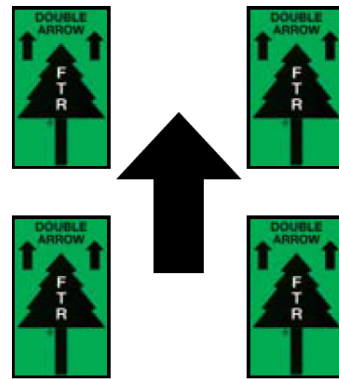
Down pre-turn arrows indicating caution, a major left turn just ahead.



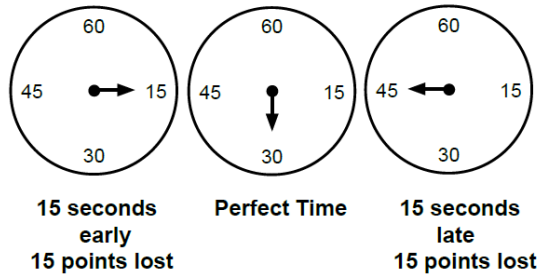
**Exhibit 7**

**Hare Scrambles Only**

Double over-and-under GREEN arrows straddling the trail indicating the rider must go between the arrows and cannot ride to the outside of either. In an open field section, the inside of the turn double arrows will be mounted to an object that can't be run over by a motorcycle. (Such as a post.)



**Exhibit 8**



Riders Due	Minute	Arrived	Regular Points Lost	Emergency Points Lost
10:31	10:31:28		0	2
10:31	10:31:35		0	5
10:31	10:32:45		1	75
10:31	10:30:05		2	85
10:31	10:35:12		4	222



Year	President	Enduro	Hare Scrambles	Motocross	Quad Scrambles
2016	Randy Faul	Ron Commo III	Garrett Edmisten	No Series	No Series
2015	Randy Faul	Ron Commo III	Garrett Edmisten	No Series	No Series
2014	Ford Snodgrass	Ron Commo III	Garrett Edmisten	Steve Loomis, Jr.	No Series
2013	Ford Snodgrass	Tyler Trammell	Garrett Edmisten	Barry McCarty	No Series
2012	Ford Snodgrass	Tyler Trammell	Mose Howard	No Series	No Series
2011	Ford Snodgrass	Hunter Williams	Garrett Edmisten	David Dreggors	No Series
2010	Allen Pearce	Mose Howard	Travis Hullfish	Tommy Thompson	No Series
2009	Allen Pearce	Mose Howard	Eric McCann	Matthew Pedrero	No Series
2008	Randy Faul	Tommy Veator	Travis Hullfish	Travis Hullfish	Taylor Kiser
2007	Randy Faul	Tommy Veator	Joey Baker	Eric Braun	Wes Kraft
2006	Randy Faul	Russell Bobbitt	Garrett Edmisten	Michael Hall	Chuck W Piper
2005	Randy Faul	Russell Bobbitt	Garrett Edmisten	David Hall	No Series
2004	Randy Faul	Jason Chancey	Garrett Edmisten	Michael Hall	No Series
2003	Randy Faul	Bradley Hodge	Garrett Edmisten	Michael Kerr	No Series
2002	Terry Enyart	Bradley Hodge	Garrett Edmisten	Michael Miller	No Series
2001	Terry Enyart	Tommy Veator	Mike Phillips	Kyle McAfee	No Series
2000	Terry Enyart	Ashley Brewer	Dustin Morgan	Kyle McAfee	No Series
1999	Terry Enyart	Ashley Brewer	Bobby Moriarty	Garrett Edmisten	No Series
1998	Conrad Eigenmann	Ashley Brewer	Joey Argentine	Jonny Simpkins	No Series
1997	Conrad Eigenmann	Frank Ramey	Mike Phillips	Conrad Eigenmann	No Series
1996	Jack Terrell	Frank Ramey	Mike Phillips	No Series	No Series
1995	Jack Terrell	Joey Hopkins	Mike Phillips	No Series	No Series
1994	Robert Possehl	Joey Hopkins	Kenny Keylon	No Series	No Series
1993	Robert Possehl	Joey Hopkins	Mike Phillips	No Series	No Series
1992	Robert Possehl	Joey Hopkins	Kenny Keylon	No Series	No Series
1991	Kirk Braden	Joey Hopkins	Kenny Keylon	No Series	No Series
1990	Greg Johnson	Joey Hopkins	Kenny Boyd	No Series	No Series
1989	Greg Johnson	Mark Stevens	Kenny Keylon	No Series	No Series
1988	Nick Krupa	Allen Gravitt	Kenny Keylon	No Series	No Series
1987	Nick Krupa	Glenn Warren	Bruce Buerk	No Series	No Series
1986	Ken Ford	Kevin Stevens	Marcus Rickett	No Series	No Series
1985	Ken Ford	Mark Stevens	Marcus Rickett	No Series	No Series
1984	Dr. Doug Qualls	Mark Stevens	Marcus Rickett	No Series	No Series
1983	Dr. Doug Qualls	Kevin Stevens	Mike Leeson	No Series	No Series
1982	Jack Huffman	Kevin Stevens	Mike Leeson	No Series	No Series
1981	Jack Huffman	Kevin Stevens	Mike Leeson	No Series	No Series
1980	Larry Shearer	Ben Booz	Karl Taylor	No Series	No Series
1979	Larry Dudley	Kevin Stevens	Kevin Stevens	No Series	No Series
1978	Herm Stevens	Kevin Stevens	Steve Fisher	No Series	No Series
1977	Bob Goucher	Ken Spears	No Series	No Series	No Series
1976	Dave Bixler	Ken Keylon Sr.	No Series	No Series	No Series
1975	M.J. Eberhart	Ken Keylon Sr.	No Series	No Series	No Series
1974	Bill Quinn	Ken Keylon Sr.	No Series	No Series	No Series
1973	Gene Canham	Gene Canham	No Series	No Series	No Series
1972	Jim Hine	Rex Knowles	No Series	No Series	No Series
1971	Jim Hine	No Series	No Series	No Series	No Series